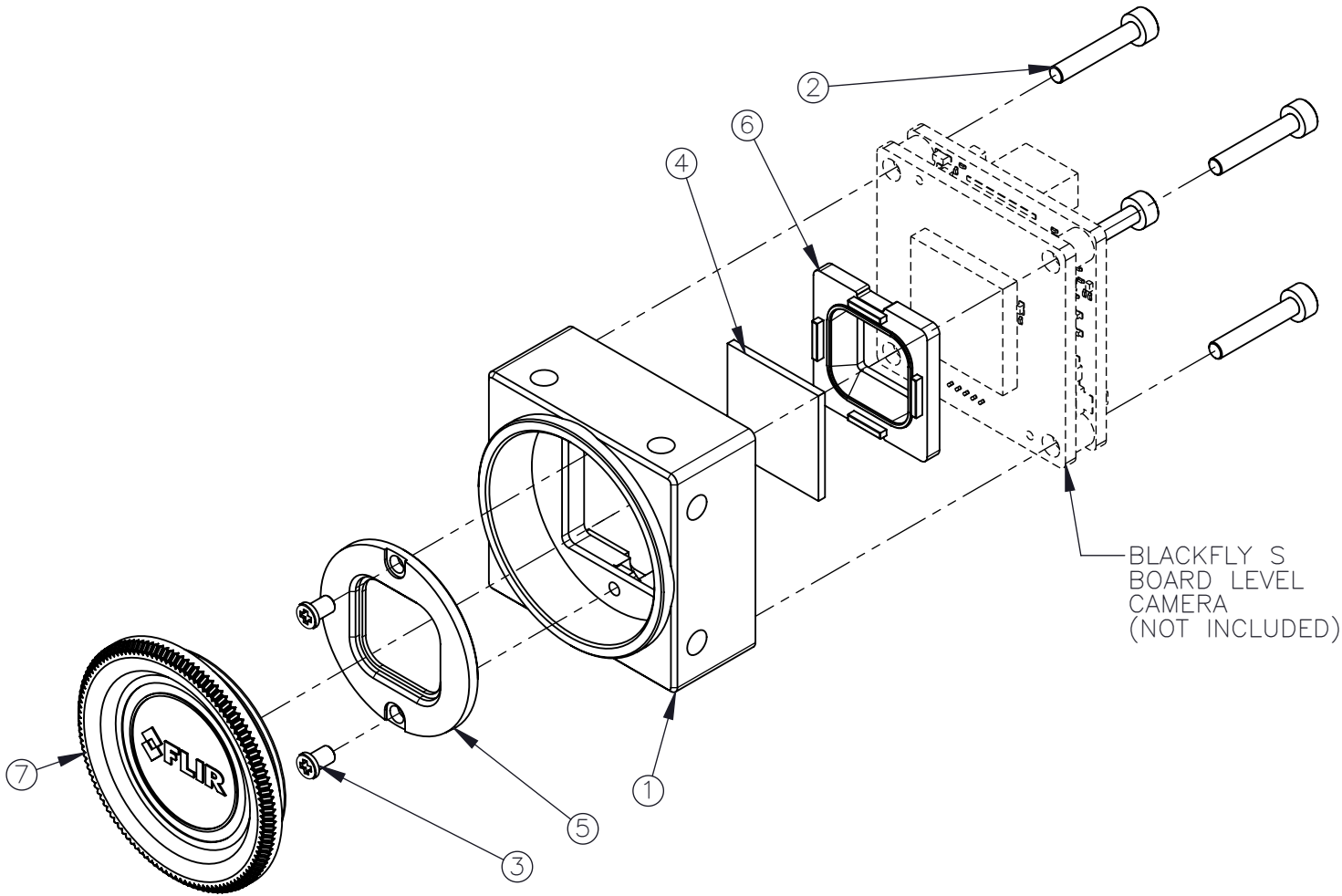
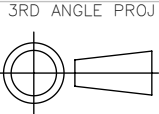


REVISIONS				
REV.	DESCRIPTION	DATE DONE	DONE BY	CHECKED BY
0	INITIAL RELEASE	30.OCT.24	DAVID	THOMAS

ITEM NO.	PART NUMBER	DESCRIPTION	QTY.
1	4215976	BFS-BD CS-MNT LENS HOLDER/12-02702-00000	1
2	21-M42D0-12L01	SCRW SKT M2(DIA) X 12(L) SS	4
3	21-M62D0-3L00L	METRC X-RCESSED M2X3 SS BLK W THDLCKV80	2
4	14-20009-00000	OPTICS IR-CUT FILTER 14x14x1MM	1
5	12-00608-00001	GLASS RETAINER 2M ABS PLAST CPL	1
6	21-0G000-00149	GKT 2/3 MAT IMX121	1
7	14-50001-00002	OPTICS COVER C/CS MOUNT PLASTIC DUST	1



PROPRIETARY AND CONFIDENTIAL  
THE INFORMATION CONTAINED IN THIS DRAWING IS  
THE SOLE PROPERTY OF FLIR INTEGRATED IMAGING  
SOLUTIONS. ANY REPRODUCTION IN PART OR  
WHOLE WITHOUT THE WRITTEN PERMISSION OF FLIR  
INTEGRATED IMAGING SOLUTIONS IS PROHIBITED.



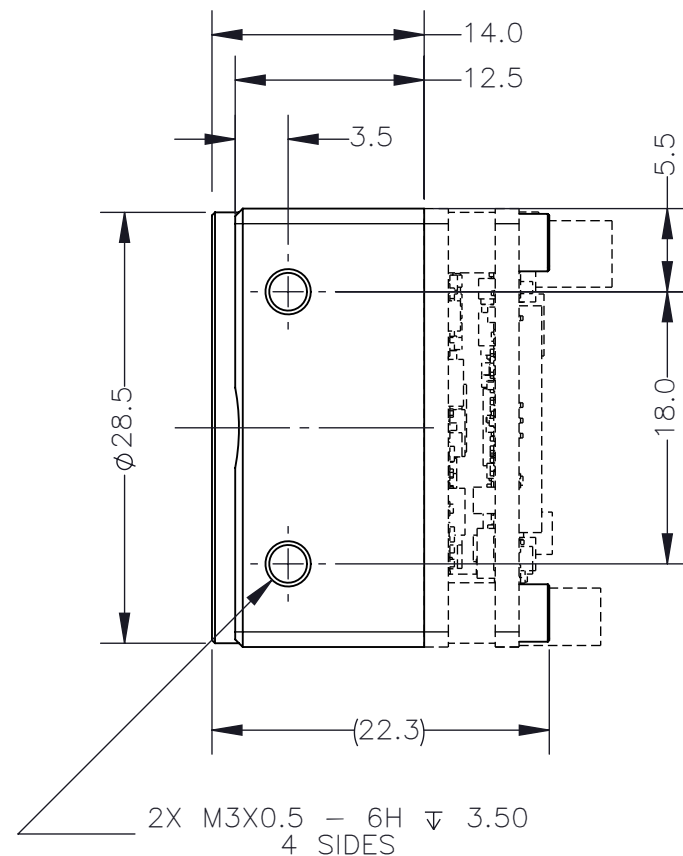
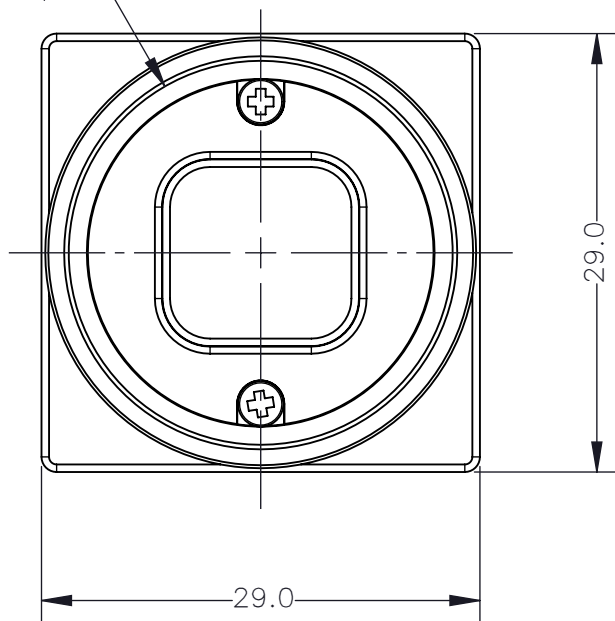
TOLERANCES  
X.X ±0.3  
X.XX ±0.10  
X.XXX ±0.020  
ANGLES ±0.5°

UNLESS OTHERWISE  
STATED:  
ALL DIMENSIONS IN MM  
MACHINE FINISH 1.6μM

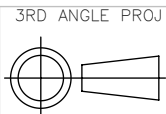
SCALE	DWG NO	SHEET	REV
4:3	ACC-01-5013	1 OF 2	0
SIZE	TITLE		
A	CS-MNT LENS HOLDER BFS-BD W IR FILTER		

NOTE: DUST CAP 14-50001-00002 NOT SHOWN

(1-32  
LENS THREAD)



PROPRIETARY AND CONFIDENTIAL  
THE INFORMATION CONTAINED IN THIS DRAWING IS  
THE SOLE PROPERTY OF FLIR INTEGRATED IMAGING  
SOLUTIONS. ANY REPRODUCTION IN PART OR  
WHOLE WITHOUT THE WRITTEN PERMISSION OF FLIR  
INTEGRATED IMAGING SOLUTIONS IS PROHIBITED.



TOLERANCES  
X.X ±0.3  
X.XX ±0.10  
X.XXX ±0.020  
ANGLES ±0.5°

UNLESS OTHERWISE  
STATED:  
ALL DIMENSIONS IN MM  
MACHINE FINISH 1.6μM

SCALE DWG NO  
2:1 ACC-01-5013  
SIZE TITLE  
A CS-MNT LENS HOLDER BFS-BD W IR FILTER

SHEET REV  
2 OF 2 0