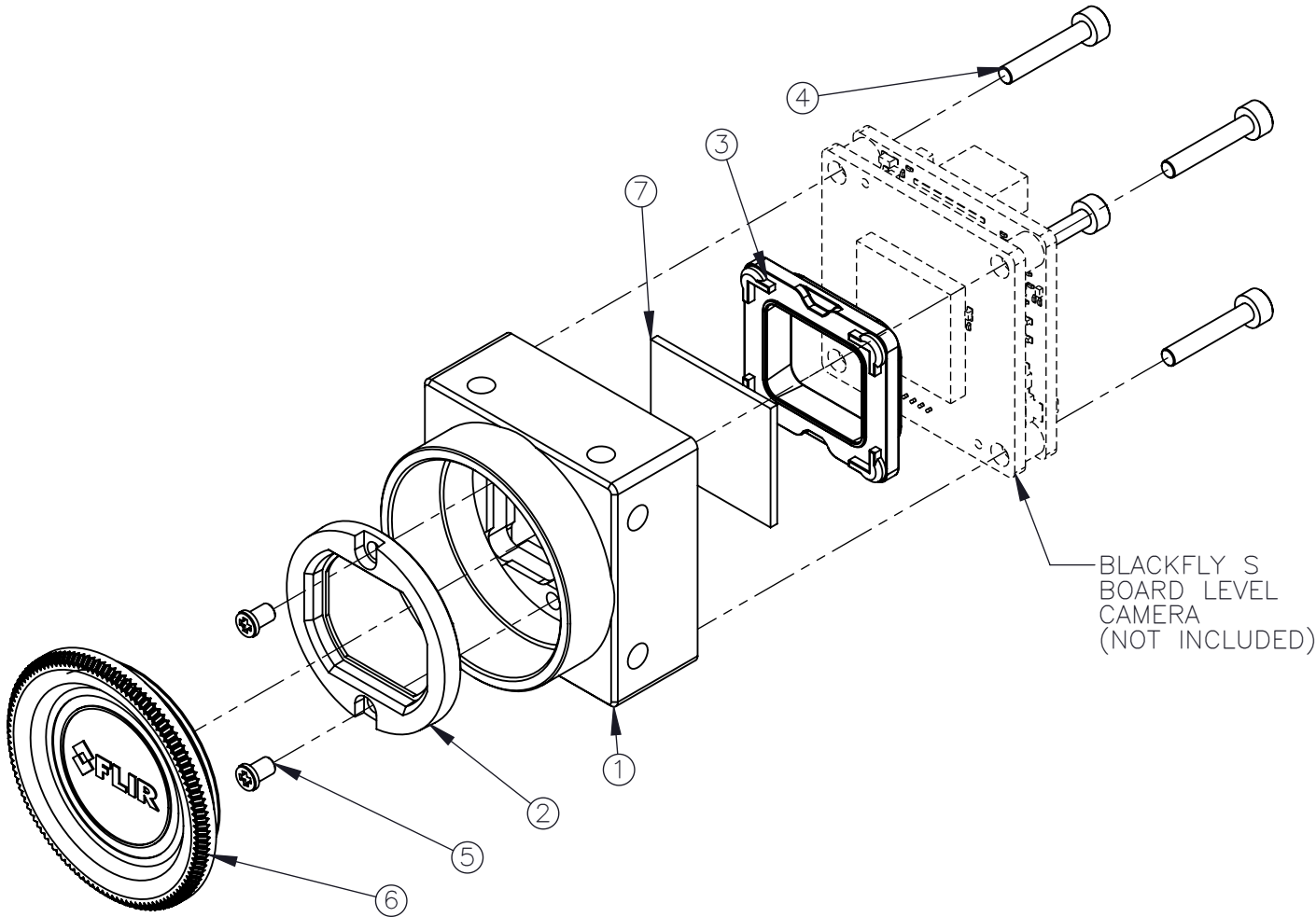
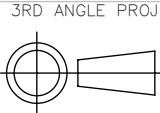


REVISIONS				
REV.	DESCRIPTION	DATE DONE	DONE BY	CHECKED BY
0	INITIAL RELEASE	29.OCT.24	DAVID	THOMAS

ITEM NO.	PART NUMBER	DESCRIPTION	QTY.
1	4215965	BFS-BD C-MNT LENS HOLDER/12-02701-00000	1
2	4222617	RETAINER 1"/12-01905-00001	1
3	21-0G000-00249	GASKET SANTOPRENE 1" IMX250	1
4	21-M42D0-12L01	SCRW SKT M2(DIA) X 12(L) SS	4
5	21-M62D0-3L00L	METRC X-RCESSED M2X3 SS BLK W THDLCKV80	2
6	14-50001-00002	OPTICS COVER C/CS MOUNT PLASTIC DUST	1
7	14-20010-00000	OPTICS IR-CUT FILTER 15.5x18x1MM	1



PROPRIETARY AND CONFIDENTIAL
THE INFORMATION CONTAINED IN THIS DRAWING IS
THE SOLE PROPERTY OF FLIR INTEGRATED IMAGING
SOLUTIONS. ANY REPRODUCTION IN PART OR
WHOLE WITHOUT THE WRITTEN PERMISSION OF FLIR
INTEGRATED IMAGING SOLUTIONS IS PROHIBITED.



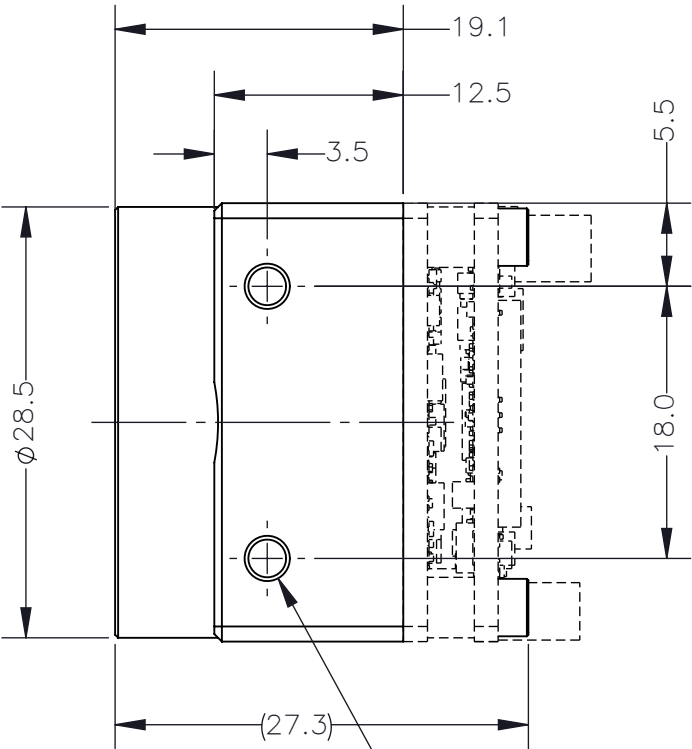
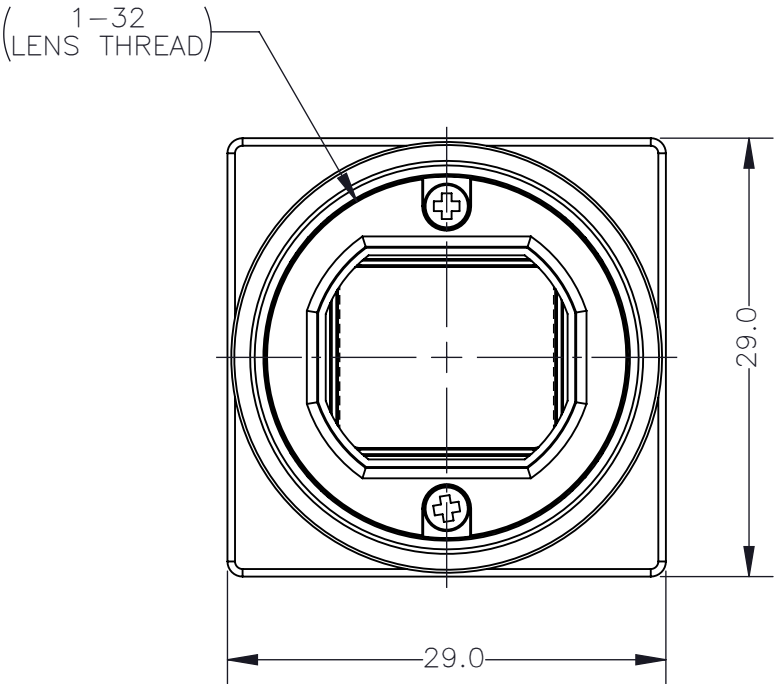
TOLERANCES
X.X ±0.3
X.XX ±0.10
X.XXX ±0.020
ANGLES ±0.5°

UNLESS OTHERWISE
STATED:
ALL DIMENSIONS IN MM
MACHINE FINISH 1.6μM

SCALE DWG NO
4:3 ACC-01-5011
SIZE TITLE
A C-MNT LENS HOLDER BFS-BD W IR FILTER

SHEET REV
1 OF 2 0

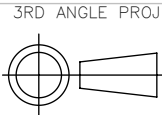
NOTE: DUST CAP 14-50001-00002 NOT SHOWN



2X M3X0.5 - 6H ∇ 3.5
4 SIDES



PROPRIETARY AND CONFIDENTIAL
THE INFORMATION CONTAINED IN THIS DRAWING IS
THE SOLE PROPERTY OF FLIR INTEGRATED IMAGING
SOLUTIONS. ANY REPRODUCTION IN PART OR
WHOLE WITHOUT THE WRITTEN PERMISSION OF FLIR
INTEGRATED IMAGING SOLUTIONS IS PROHIBITED.



TOLERANCES
X.X ± 0.3
X.XX ± 0.10
X.XXX ± 0.020
ANGLES $\pm 0.5^\circ$

UNLESS OTHERWISE
STATED:
ALL DIMENSIONS IN MM
MACHINE FINISH 1.6 μ M

SCALE DWG NO
2:1 ACC-01-5011

SIZE TITLE
A C-MNT LENS HOLDER BFS-BD W IR FILTER

SHEET REV
2 OF 2 0