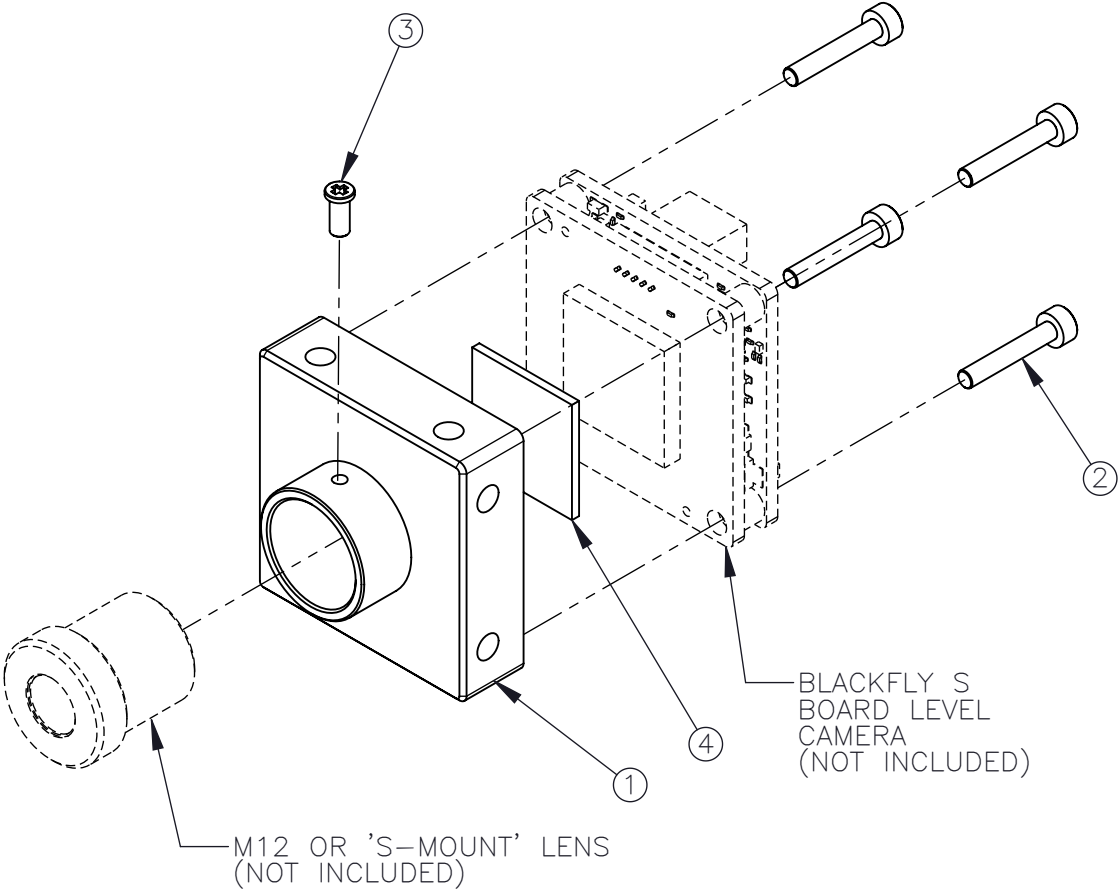


REVISIONS				
REV.	DESCRIPTION	DATE DONE	DONE BY	CHECKED BY
0	INITIAL RELEASE	30.OCT.24	DAVID	THOMAS

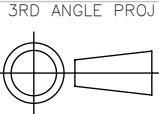
ITEM NO.	PART NUMBER	DESCRIPTION	QTY.
1	4229524	BFS-BD S-MNT LENS HOLDER/12-02703-00001	1
2	21-M42D0-12L01	SCRW SKT M2(DIA) X 12(L) SS	4
3	21-M62D0-4L502	X-RES PAN HEAD LW HEAD M2 X 4.5 SS BLK	1
4	14-20009-00000	OPTICS IR-CUT FILTER 14x14x1MM	1



NOTE:
 1. THE IR CUT FILTER (ITEM# ④) IS INSTALLED TO THE LENS MOUNT (ITEM# ①) VIA ADHESIVES.



PROPRIETARY AND CONFIDENTIAL
 THE INFORMATION CONTAINED IN THIS DRAWING IS
 THE SOLE PROPERTY OF FLIR INTEGRATED IMAGING
 SOLUTIONS. ANY REPRODUCTION IN PART OR
 WHOLE WITHOUT THE WRITTEN PERMISSION OF FLIR
 INTEGRATED IMAGING SOLUTIONS IS PROHIBITED.

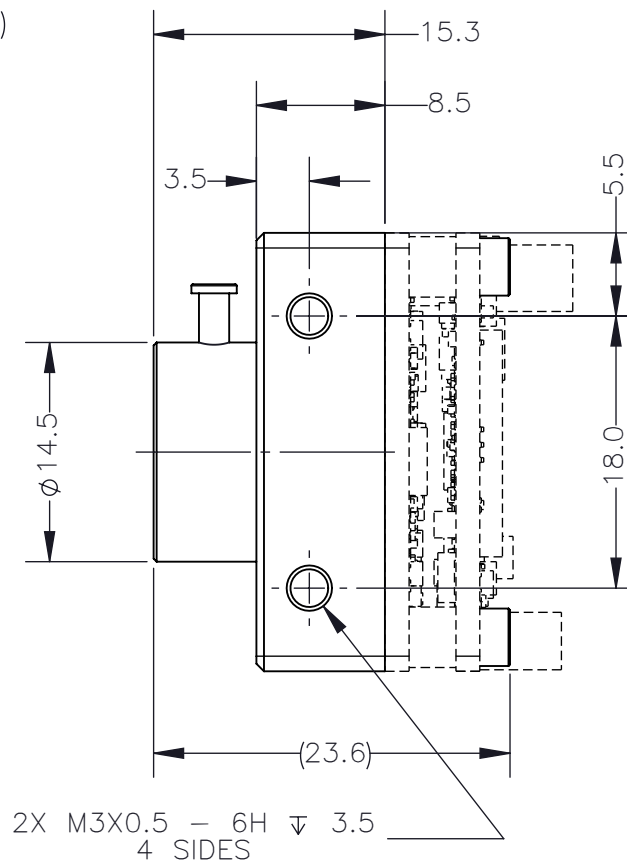
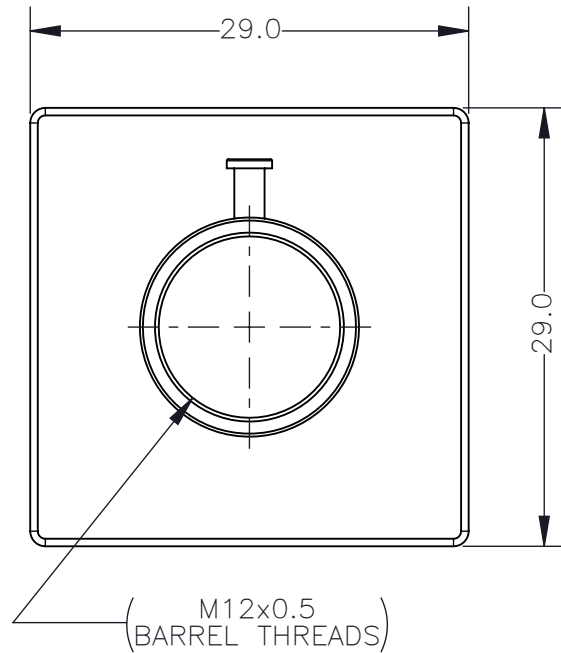
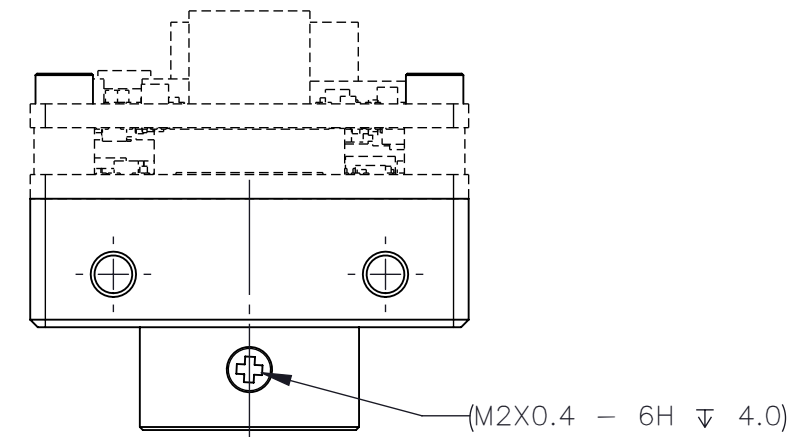


TOLERANCES
 X.X ±0.3
 X.XX ±0.10
 X.XXX ±0.020
 ANGLES ±0.5°

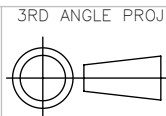
UNLESS OTHERWISE
 STATED:
 ALL DIMENSIONS IN MM
 MACHINE FINISH 1.6µM

SCALE DWG NO
 4:3 ACC-01-5009
 SIZE TITLE
 A M12 LENS HOLDER BFS-BD W IR FILTER

SHEET
 1 OF 2
 REV
 0



PROPRIETARY AND CONFIDENTIAL
THE INFORMATION CONTAINED IN THIS DRAWING IS
THE SOLE PROPERTY OF FLIR INTEGRATED IMAGING
SOLUTIONS. ANY REPRODUCTION IN PART OR
WHOLE WITHOUT THE WRITTEN PERMISSION OF FLIR
INTEGRATED IMAGING SOLUTIONS IS PROHIBITED.



TOLERANCES
X.X \pm 0.3
X.XX \pm 0.10
X.XXX \pm 0.020
ANGLES \pm 0.5°

UNLESS OTHERWISE
STATED:
ALL DIMENSIONS IN MM
MACHINE FINISH 1.6 μ M

SCALE DWG NO
2:1 ACC-01-5009
SIZE TITLE
A M12 LENS HOLDER BFS-BD W IR FILTER

SHEET REV
2 OF 2 0