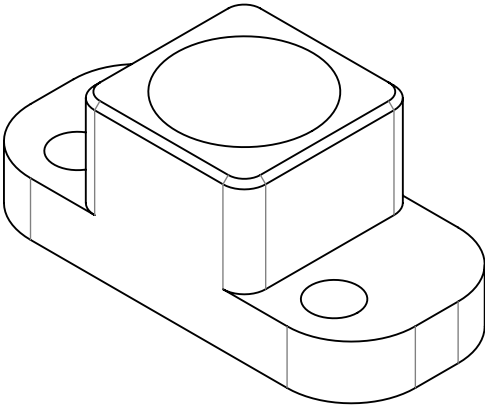
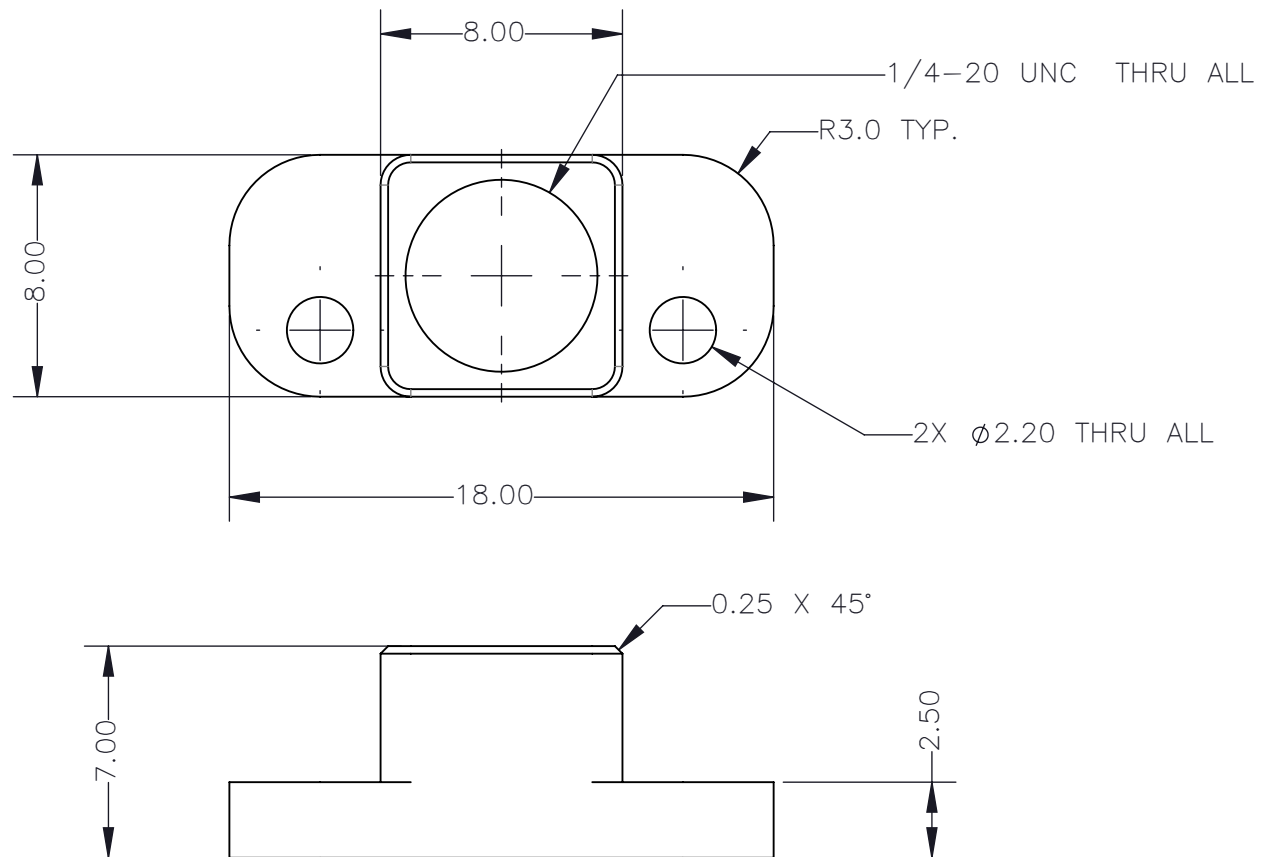


| REVISIONS |  |           |         |            |
|-----------|--|-----------|---------|------------|
| REV.      | DESCRIPTION                                | DATE DONE | DONE BY | CHECKED BY |
| 0         | INITIAL RELEASE;REFER MECH-150-02-R0 REV1; | 25.FEB.19 | DANIEL  | GUS        |

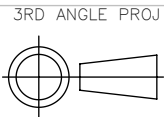


- NOTES:
1. MATERIAL IS 6061-T6 ALUMINUM
  2. LIGHT BEAD BLAST, THEN ANODIZE MIL-A-8625F, TYPE 2, CLASS 2, BLACK, 0.7-1.0 MILS
  3. MUST BE COMPLIANT WITH THE CURRENT ROHS DIRECTIVE 2002/95/EC (INCLUDING DECA-BDE)

|  |   |   |   |   |       |                    |        |     |  |
|--|---|---|---|---|-------|--------------------|--------|-----|--|
|  | PROPRIETARY AND CONFIDENTIAL<br>THE INFORMATION CONTAINED IN THIS DRAWING IS<br>THE SOLE PROPERTY OF FLIR INTEGRATED IMAGING<br>SOLUTIONS. ANY REPRODUCTION IN PART OR<br>WHOLE WITHOUT THE WRITTEN PERMISSION OF FLIR<br>INTEGRATED IMAGING SOLUTIONS IS PROHIBITED. | <div>3RD ANGLE PROJ</div>  | <div>TOLERANCES</div> <div>X.X ±0.3</div> <div>X.XX ±0.10</div> <div>X.XXX ±0.020</div> <div>ANGLES ±0.5°</div> | <div>UNLESS OTHERWISE STATED:</div> <div>ALL DIMENSIONS IN MM</div> <div>MACHINE FINISH 1.6μM</div> | SCALE | DWG NO             | SHEET  | REV |  |
|  |   |   |   |   | 2:1   | 12-00112-00000     | 1 OF 2 | 0   |  |
|  |   |   |   |   | SIZE  | TITLE              |        |     |  |
|  |   |   |   |   | A     | FFY TRIPOD ADAPTER |        |     |  |



PROPRIETARY AND CONFIDENTIAL  
THE INFORMATION CONTAINED IN THIS DRAWING IS  
THE SOLE PROPERTY OF FLIR INTEGRATED IMAGING  
SOLUTIONS. ANY REPRODUCTION IN PART OR  
WHOLE WITHOUT THE WRITTEN PERMISSION OF FLIR  
INTEGRATED IMAGING SOLUTIONS IS PROHIBITED.



TOLERANCES  
X.X ±0.3  
X.XX ±0.10  
X.XXX ±0.020  
ANGLES ±0.5°

UNLESS OTHERWISE  
STATED:  
ALL DIMENSIONS IN MM  
MACHINE FINISH 1.6µM

SCALE DWG NO  
2:1 12-00112-00000  
SIZE TITLE  
A FFY TRIPOD ADAPTER

SHEET REV  
2 OF 2 0