

3. STARTING GOCATOR

NOTE: Gocator must be connected to a host computer in order to launch the user interface and set up the sensor.

Gocator sensors are configured by connecting with a web browser. The user interface supports FireFox 3.5+, Chrome 4.0+, and Internet Explorer 8.0+. (Use Firefox or Chrome for optimal performance.) The Adobe Flash browser plugin version 10.0+ must be installed. Version 4.0 of the interface is shown here.

A. LAUNCHING THE INTERFACE

Step 1

Change network setting on host computer

- In Windows 7
- Open the Control Panel>Network and Sharing Center>Change Adapter Settings.
 - Right-click desired network connection, then click Properties.
 - On the Networking tab, click Internet Protocol Version 4 (TCP/IPv4), then click Properties.
 - Select “Use the following IP address” option.
 - Enter IP Address “192.168.1.5” and Subnet Mask “255.255.255.0”, then click OK.

In Mac OS X 10.6

- Open the Network Pane in System Preferences and select Ethernet.
- Set Configure to “Manually”.
- Enter IP Address “192.168.1.5” and Subnet Mask “255.255.255.0”, then click Apply.

Gocator is shipped with the following default network configuration

Setting	Default
DCHP	Disabled
IP Address	192.168.1.10
Subnet Mask	255.255.255.0
Gateway	0.0.0.0

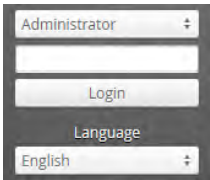
Step 2

Open a web browser and enter the sensor address



Step 3

Select language of choice



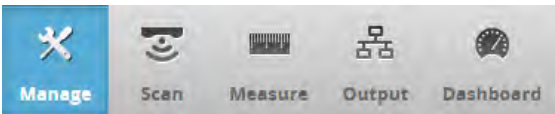
Step 4

The Administrator password is initially blank. Press the Login button to connect

B. RUNNING GOCATOR

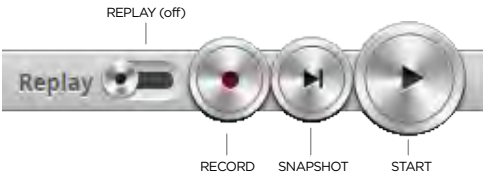
Step 1

Select the Manage page.



Step 2

Ensure that Replay mode is off (slider set to left) and that the Safety switch is enabled or the Safety input is high. Press the Start button in the toolbar to start the sensor (a light pattern should now be visible).



Step 3

Move target into the projected light pattern and measure!

NOTE

Gocator sensors can also interface directly with HexSight. Refer to the HexSight Quick Start Guide for more information.

©2016 LMI Technologies Inc. All rights reserved.

This product is designed for use solely as a component and as such it does not comply with the standards relating to laser product specified in U.S. FDA CFR Title 21 Part 1040.

Information contained within this manual is subject to change without notice.

Product names mentioned herein may be trademarks of LMI Technologies Inc. Any other company or product names mentioned herein may be trademarks of their respective owners.

Trademarks and Restrictions

No part of this publication may be copied, photocopied, reproduced, translated, transcribed, or reduced to any electronic medium or machine readable form without prior written consent of LMI Technologies Inc.

LMI Technologies Inc.

This document, submitted in confidence, contains proprietary information which shall not be reproduced or transferred to other documents or disclosed to others or used for manufacturing or any other purpose without prior written permission of LMI Technologies Inc.

Proprietary

contact/locations.

LMI Technologies has sales offices and distributors worldwide. All contact information is listed at lmi3d.com/

Asia Pacific

LMI (Shanghai) Trading Co., Ltd.

Shanghai, China

+86 21 5441 0711

EMEAR

LMI Technologies GmbH

Berlin, Germany

+49 (0) 3328 9360 0

Americas

LMI Technologies (Head Office)

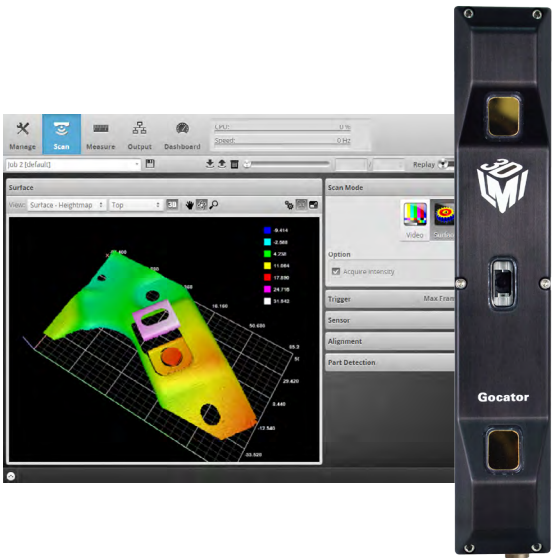
Vancouver, Canada

+1 604 636 1011



Gocator® 3100

Quick Start Guide



 **LMI TECHNOLOGIES**
www.lmi3d.com

For the user manual, CAD drawings, firmware release notes, SDK, and more, go to www.lmi3d.com/support/downloads

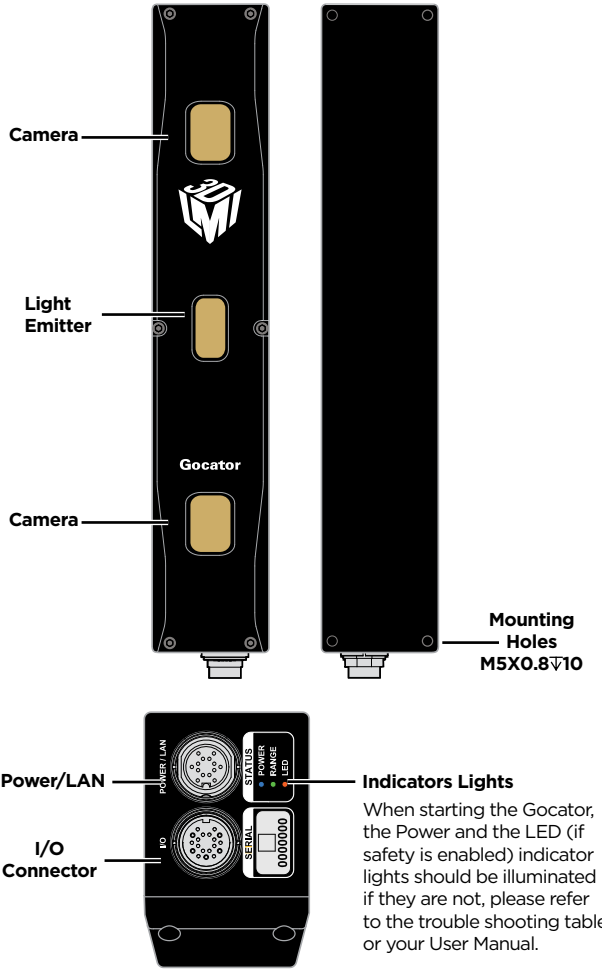
15198-01.05-Manual_Quickstart_Gocator-3100A-Series

TROUBLESHOOTING

PROBLEM	SUGGESTED RESOLUTION
Mechanical / Environmental	
The sensor is warm.	• It is normal for a sensor to be warm when powered on.
Connection	
When connecting with a web browser, the sensor is not found (page does not load).	• Verify the sensor power is on. This will be indicated by an illuminated POWER indicator light. • Verify the Power & Ethernet cordset is connected to the Power/LAN connector and the Ethernet end's RJ45 of the cordset is connected to the Ethernet switch. • Verify that the client computer's network settings are properly configured. Refer to the Connecting to a New Sensor section in the Gocator user manual or to your computer's documentation on configuring a network adapter. • Download 14405-x.x.x.x_software_go2_tools.zip from the downloads area of LMI's website at www.lmi3d.com . <i>Unzip and run the Sensor Discovery Tool [bin>win32>kDiscovery.exe] to verify that the sensor has the correct network settings.</i>
When attempting to log in, the password is not accepted.	• Download 14405-x.x.x.x_software_go2_tools.zip from from the downloads area of LMI's website at www.lmi3d.com . <i>Unzip and run the Sensor Discovery Tool [bin>win32>kDiscovery.exe] to discover the sensor on the network and restore default settings.</i> NOTE: Using the Sensor Discovery tool will reset your configuration settings to default - these settings can be recovered from the backup files if previously saved.
3D Data Acquisition	
When the Play button is pressed, the sensor does not emit LED light.	• Verify that the LED indicator light on the Gocator is illuminated, if not, the safety input signal is off. <i>Refer to the Safety Input section in the Gocator user manual to determine the correct solution for your application.</i> • The exposure setting may be too low. Refer to the Exposure section in the Gocator User Manual for more information on configuring exposure time. • Use the Snapshot button instead of the Start button to capture 3D point cloud data. If the LED light flashes when you use the Snapshot button, but not when you use the Start button, then the problem could be related to triggering.
The sensor CPU level is near 100%.	• Review the active measurements and eliminate any that are unnecessary measurements. • Consider reducing the trigger speed. • Consider reducing the data resolution.

GOCATOR OVERVIEW

Each Gocator 3100 model is designed with a unique Clearance Distance (CD), Measurement Range (MR) and Field of View (FOV). Refer to your User Manual for more information about your model.



GROUNDING GOCATOR

Gocator housings should be grounded to the earth and the grounding shield of the Gocator I/O cordsets. Gocator sensors have been designed to provide adequate grounding through the use of M5 x 0.8 screws. Always check grounding with a multi-meter to ensure electrical continuity between the mounting frame and the Gocator connectors.

The frame or electrical cabinet that the Gocator is mounted to **must** be connected to **earth ground**.

GROUNDING CORDSET (RECOMMENDED)

To minimize interference with other equipment, the Power & Ethernet or the Power & Ethernet to Master cordset (depending on cordset used in system) can be grounded by terminating the cordset shield before the split. The most effective grounding method is to use a 360-degree clamp. See User Manual for instructions.

ELECTRICAL SAFETY

Minimize voltage potential between system ground and sensor ground

Care should be taken to minimize the voltage potential between system ground (ground reference for I/O signals) and sensor ground. Use shielded cables with shield grounded at both ends. Sensor housing should be connected to earth ground.

Use a suitable power supply

The +24-48V power supply used with Gocator 3100 sensors should be an isolated supply with inrush current protection.

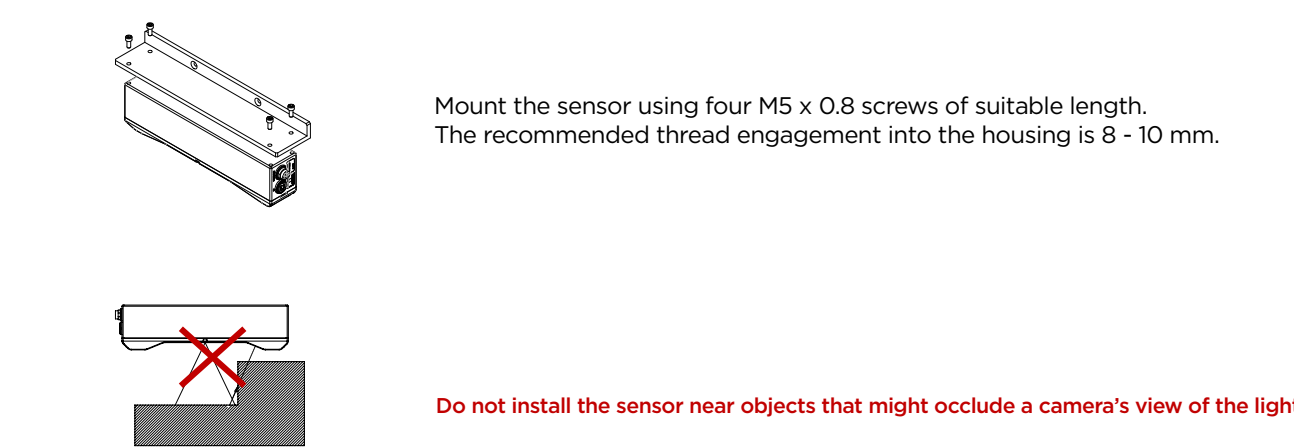
Use care when handling powered devices

Wires connecting to the sensor should not be handled while the sensor is powered. Doing so may cause electrical shock to the user or damage to the equipment.

Failure to adhere to the guidelines described in this section may result in electrical shock or equipment damage.

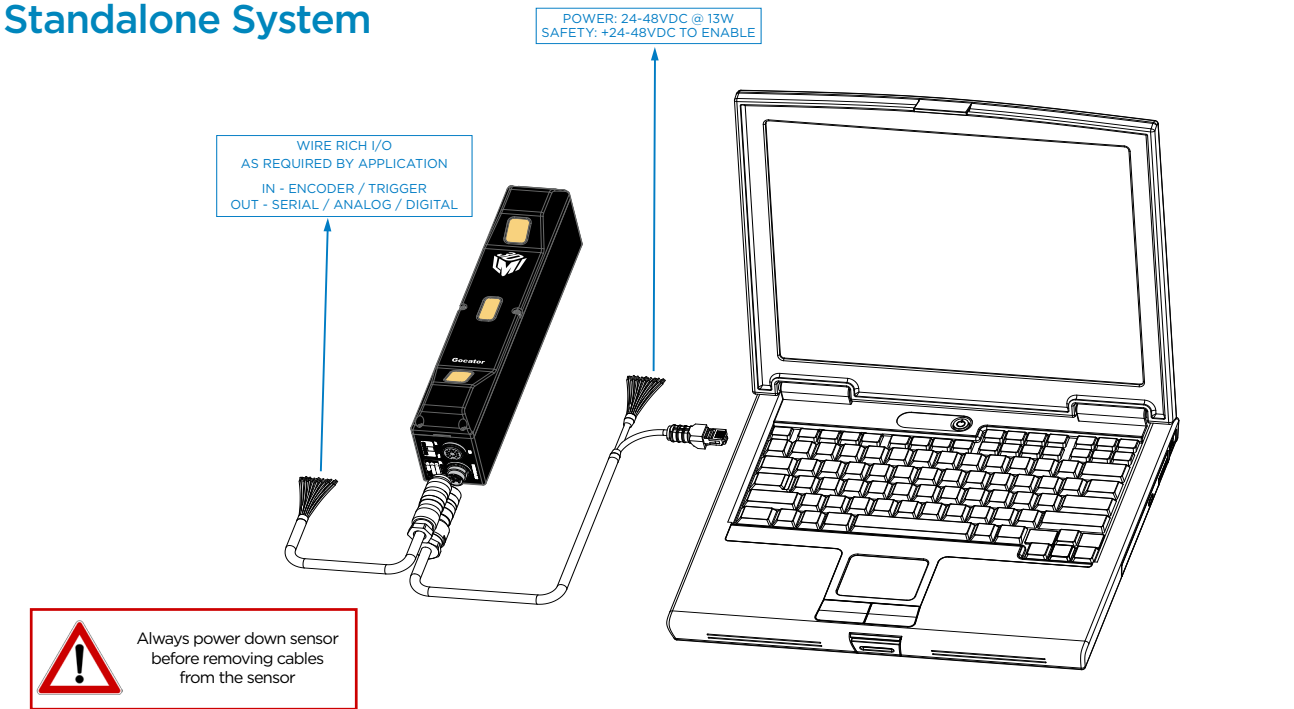
1. MOUNTING

NOTE: Mounting the Gocator is recommended prior to applying power. Ensure that a proper earth ground and heat sink have been properly established prior to applying power.

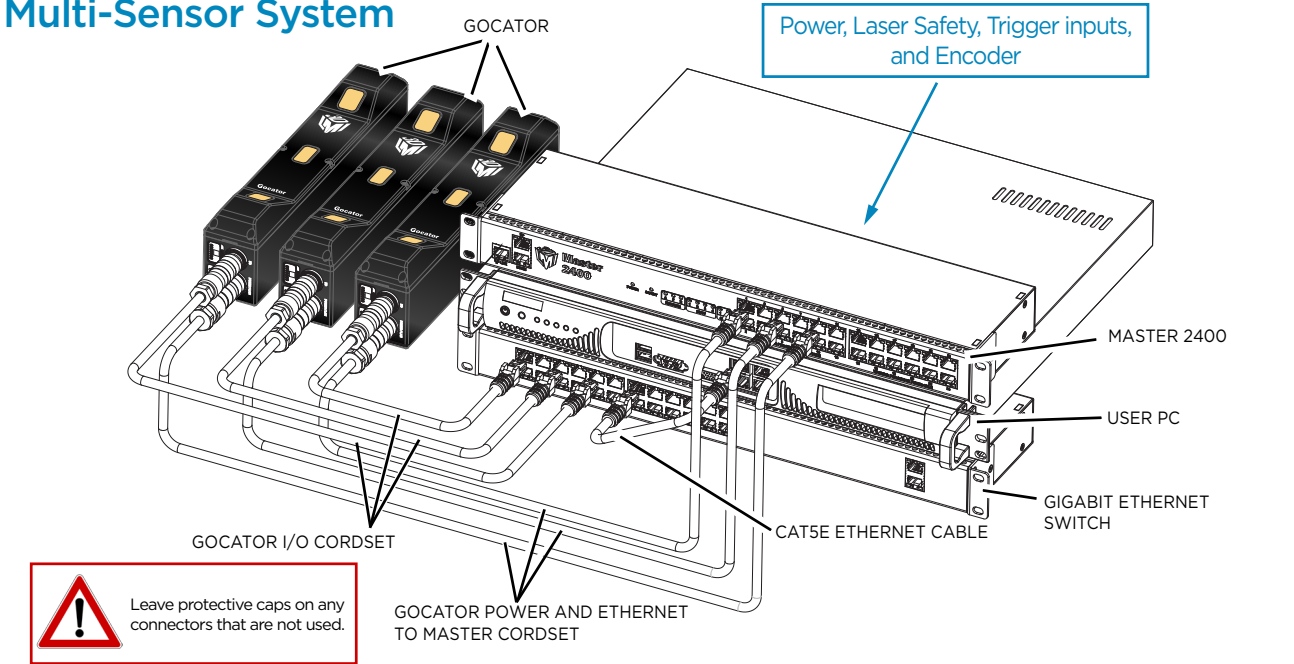


2. CONNECTING GOCATOR TO A HOST COMPUTER

Standalone System



Multi-Sensor System



Connector Pin Details

Gocator Power/LAN (to standalone and to Master)			Pin	Function	Cable Conductor Color	Pin	Function	Cable Conductor Color
			L	GND_24-48V	White/Orange & Black	N	Ethernet MX1-	Orange
			L	GND_24-48V	Orange/Black	O	Ethernet MX2+	White/Green
			A	DC_24-48V	White/Green & Black	P	Ethernet MX2-	Green
			A	DC_24-48V	Green/Black	S	Ethernet MX3-	White/Blue
			G	Safety-	White/Blue & Black	R	Ethernet MX3+	Blue
			J	Safety+	Blue/Black	T	Ethernet MX4+	White/Brown
			E	Sync+	White/Brown & Black	U	Ethernet MX4-	Brown
			C	Sync-	Brown/Black			
			M	Ethernet MX1+	White/Orange			
Gocator I/O			Pin	Function	Cable Conductor Color	Pin	Function	Cable Conductor Color
			D	Trigger_in+	Grey	A	Encoder_Z+	White/Green & Black
			H	Trigger_in-	Pink	L	Encoder_Z-	Green / Black
			N	Out_1+ (Digital Output 0)	Red	B	Serial_out+	White
			O	Out_1- (Digital Output 0)	Blue	C	Serial_out-	Brown
			S	Out_2+ (Digital Output 1)	Tan	E	Reserved	Blue / Black
			T	Out_2- (Digital Output 1)	Orange	G	Reserved	White / Blue & Black
			M	Encoder_A+	White/Brown & Black	P	Analog_out+	Green
			U	Encoder_A-	Brown / Black	F	Analog_out-	Yellow & Maroon/White
			I	Encoder_B+	Black	R	Reserved	Maroon
			K	Encoder_B-	Violet			