

3. STARTING GOCATOR

NOTE: Gocator must be connected to a host computer in order to launch the user interface and setup the sensor.

Gocator sensors are configured by connecting with a web browser. The user interface is supported with FireFox 3.5+, Chrome 4.0+, & Internet Explorer 8.0+. (Use FireFox or Chrome for optimal performance.) The Adobe Flash browser plugin version 10.0+ must be installed.

A. LAUNCHING THE INTERFACE

Step 1

Change network setting on host computer

In Windows 7

- Open the Control Panel>Network and Sharing Center>Change Adapter Settings.
- Right-click desired network connection, then click Properties.
- On the Networking tab, click Internet Protocol Version 4 (TCP/IPv4), then click Properties.
- Select “Use the following IP address” option.
- Enter IP Address “192.168.1.5” and Subnet Mask “255.255.255.0”, then click OK.

In Mac OS X 10.6

- Open the Network Pane in System Preferences and select Ethernet.
- Set Configure to “Manually”.
- Enter IP Address “192.168.1.5” and Subnet Mask “255.255.255.0”, then click Apply.

Gocator is shipped with the following default network configuration

Setting	Default
DCHP	Disabled
IP Address	192.168.1.10
Subnet Mask	255.255.255.0
Gateway	0.0.0.0

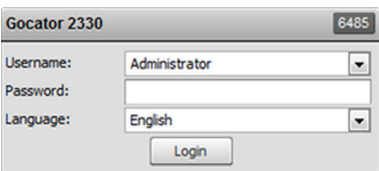
Step 2

Open a web browser and enter the sensor address



Step 3

Select language of choice



Step 4

The Administrator password is initially blank. Press the Login button to connect

B. RUNNING GOCATOR

Step 1

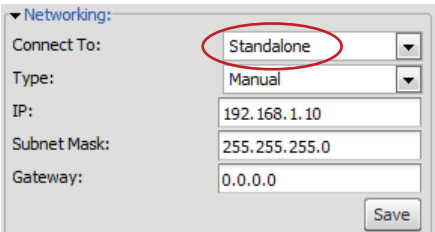
Select the Connection Page



Step 2

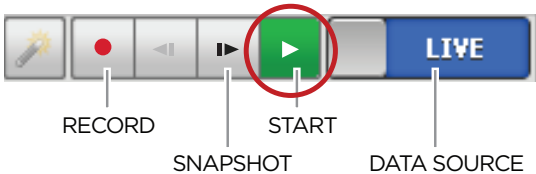
Select what the Gocator will be connected to

- |                    |                    |
|--------------------|--------------------|
| Single Sensor:     | Select Standalone  |
| Using Master 100:  | Select Master 100  |
| Using Master 400:  | Select Master 400  |
| Using Master 800:  | Select Master 800  |
| Using Master 1200: | Select Master 1200 |
| Using Master 2400: | Select Master 2400 |



Step 3

Ensure data source is set to LIVE and the Laser Safety switch is enabled or the Laser Safety input is high. Press the PLAY button in the toolbar to start the sensor (a laser line should now be visible)

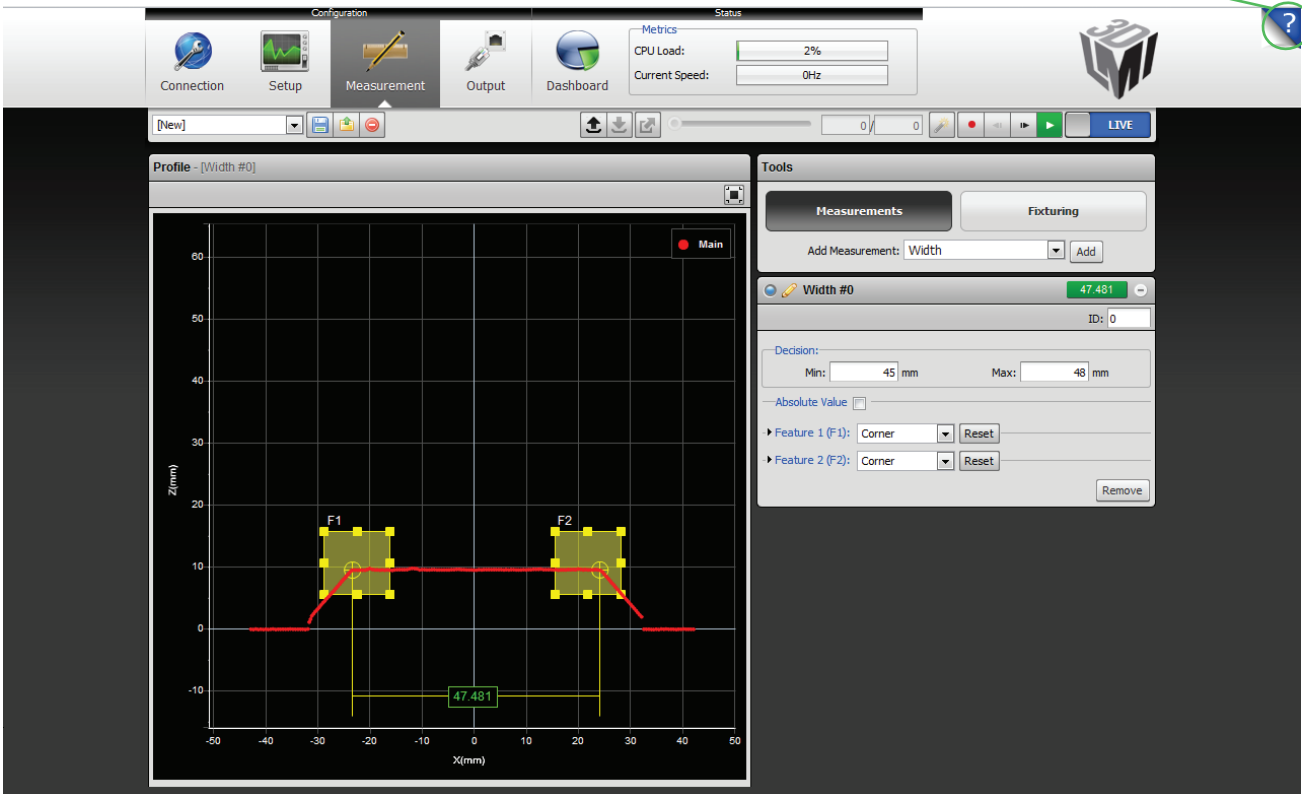


Step 4

Move target into the laser plane and measure!

Once connected to the Gocator, click the Help icon to view the User Manual, update firmware, or download SDK

An example of the user interface in use



TROUBLESHOOTING

PROBLEM	SUGGESTED RESOLUTION
<b>Mechanical / Environmental</b>	
The sensor is warm.	• It is normal for a sensor to be warm when powered on.
<b>Connection</b>	
When connecting with a web browser, the sensor is not found (page does not load).	• Verify the sensor power is on. This will be indicated by an illuminated POWER LED. • Verify the Power & Ethernet cordset is connected to the Power/LAN connector and the Ethernet end's RJ45 of the cordset is connected to the Ethernet switch • Verify that the client computer's network settings are properly configured. Refer to the Connecting to a New Sensor section in the Gocator user manual or to your computer's documentation on configuring a network adapter. • Download 14405-x.x.x.x_software_go2_tools.zip from the downloads area of LMI's website at www.lmi3d.com. <i>Unzip and run the Sensor Discovery Tool [bin&gt;win32&gt;kDiscovery.exe] to verify that the sensor has the correct network settings.</i>
When attempting to log in, the password is not accepted.	• Download 14405-x.x.x.x_software_go2_tools.zip from from the downloads area of LMI's website at www.lmi3d.com. <i>Unzip and run the Sensor Discovery Tool [bin&gt;win32&gt;kDiscovery.exe] to discover the sensor on the network and restore default settings.</i> <b>NOTE: Using the Sensor Discovery tool will reset your configuration settings to default - these settings can be recovered from the backup files if previously saved.</b>
<b>Laser Profiling</b>	
When the Play button is pressed, the sensor does not emit laser light.	• Ensure that the decal covering the laser emitter window, normally affixed to new sensors, has been removed. • Verify that the LASER LED on the Gocator is illuminated, if not, the laser safety input signal is off. Refer to <i>Laser Safety Input Section in the Gocator user manual to determine the correct solution for your application.</i> • The exposure setting may be too low. Refer to the Exposure section in the Gocator User Manual for more information on configuring exposure time.
The sensor emits laser light, but the Range Indicator does not illuminate and/or points are not displayed in the Profile Viewer.	• Verify that the measurement target is within the sensor's field of view and measurement range. <i>The RANGE LED on the Gocator will illuminate when the target is in range.</i> • Check that the exposure time is set to a reasonable level. Refer to the Exposure section in the Gocator User Manual for more information on configuring exposure time.
The sensor CPU level is near 100%.	• Review the active measurements and eliminate any that are unnecessary measurements. • Consider reducing the trigger speed. • Consider reducing the laser profiling resolution.

©2014 LMI Technologies Inc. All rights reserved.

This product is designed for use solely as a component and as such it does not comply with the standards relating to laser products specified in U.S. FDA CFR Title 21 Part 1040.

Information contained within this manual is subject to change without notice.

Trademarks and Restrictions  
Gocator™ is a registered trademark of LMI Technologies Inc. Any other company or product names mentioned herein may be trademarks of their respective owners.

No part of this publication may be copied, photocopied, reproduced, transmitted, transcribed, or reduced to any electronic medium or machine readable form without prior written consent of LMI Technologies Inc.

LMI Technologies Inc.

This document, submitted in confidence, contains proprietary information which shall not be reproduced or transferred to other documents or disclosed to others or used for manufacturing or any other purpose without prior written permission of

Europe

Phone: +31 45 574 2500

Fax: +31 45 850 7000

North America

Phone: +1 604 516 8368

Fax: +1 604 636 1011

Web: www.lmi3d.com

Email: support@lmi3d.com

Worldwide



LMI TECHNOLOGIES

www.lmi3d.com

# Gocator 2300A

## Quick Start Guide



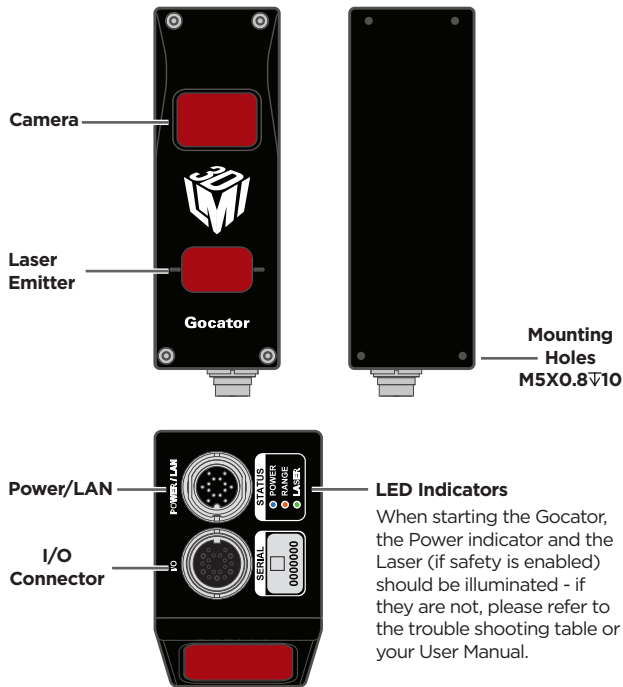
 LMI TECHNOLOGIES  
www.lmi3d.com

For the user manual, CAD drawings, firmware release notes, SDK, and more, go to [www.lmi3d.com/downloads](http://www.lmi3d.com/downloads)

15173-1.7\_Manual\_Quickstart\_Gocator-2300A-Series

GOCATOR OVERVIEW

There are several sensor models in the Gocator 2300 series, each designed with a unique Clearance Distance (CD), Measurement Range (MR) and Field of View (FOV). Refer to your User Manual for more information about your model.



GROUNDING GOCATOR

Gocator housings should be grounded to the earth and the grounding shield of the Gocator I/O cordsets. Gocator sensors have been designed to provide adequate grounding through the use of M5 x 0.8 screws. Always check grounding with a multi-meter to ensure electrical continuity between the mounting frame and the Gocator connectors.

The frame or electrical cabinet that the Gocator is mounted to **must** be connected to **earth ground**.

GROUNDING CORDSET (RECOMMENDED)

To minimize interference with other equipment, the Power & Ethernet or the Power & Ethernet to Master cordset (depending on cordset used in system) can be grounded by terminating the cordset shield before the split. The most effective grounding method is to use a 360-degree clamp. See User Manual for instructions.

ELECTRICAL SAFETY

Minimize voltage potential between system ground and sensor ground

Care should be taken to minimize the voltage potential between system ground (ground reference for I/O signals) and sensor ground. Use shielded cables with shield grounded at both ends. Sensor housing should be connected to earth ground.

Use a suitable power supply

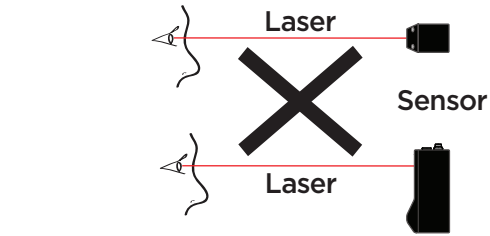
The +24-48V power supply used with Gocator 2300 sensors should be an isolated supply with inrush current protection.

Use care when handling powered devices

Wires connecting to the sensor should not be handled while the sensor is powered. Doing so may cause electrical shock to the user or damage to the equipment.

Failure to adhere to the guidelines described in this section may result in electrical shock or equipment damage.

The full laser safety details including precautions, responsibilities and requirements are stated in the Gocator User Manual. Use of controls or adjustments or performing procedures other than those specified in the User Manual may result in hazardous radiation exposure.



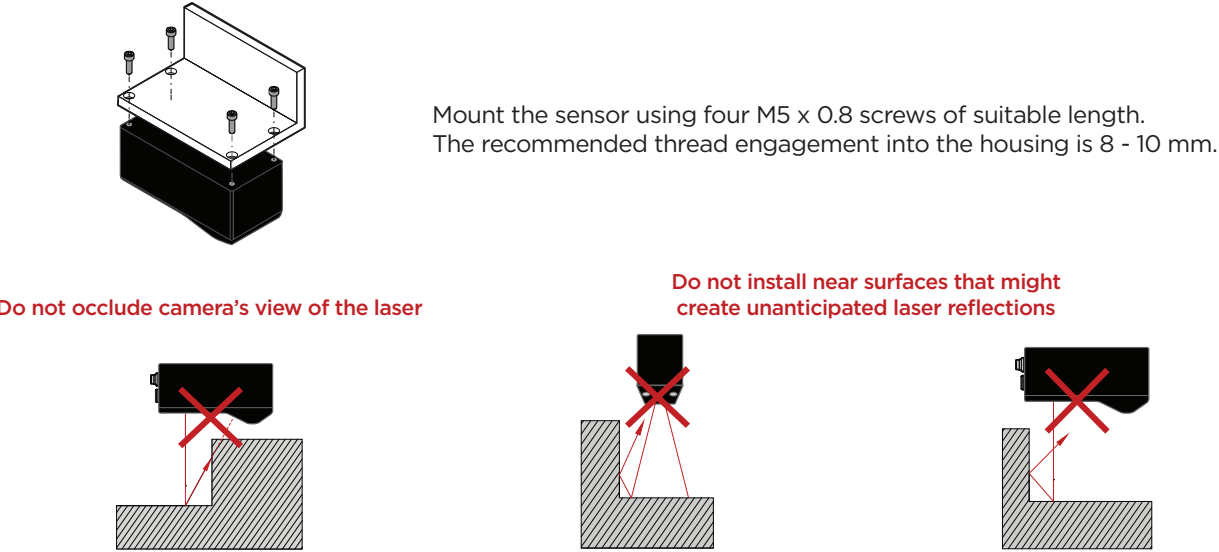
The light emitted from these devices has been set in accordance with IEC60825. However, staring into the beam, whether directly or indirectly, must be avoided. IEC60825 classifies laser products into three different categories depending on light emitted, wavelength and eye safety.

This product is designated for use solely as a component and as such it does not fully comply with the standards relating to laser products specified in U.S. FDA CFR Title 21 part 1040 and IEC 60825-1.

Class 2M: LASER RADIATION DO NOT STARE INTO THE BEAM OR VIEW DIRECTLY WITH OPTICAL INSTRUMENTS CLASS 2M LASER PRODUCT		LASER RADIATION DO NOT STARE INTO THE BEAM OR VIEW DIRECTLY WITH OPTICAL INSTRUMENTS OR MAGNIFIERS CLASS 2M LASER PRODUCT PEAK POWER: 1 mW EMITTED WAVELENGTH: 650 nm This product is designated for use solely as a component and as such it does not fully comply with the standards relating to laser products specified in U.S. FDA CFR Title 21 part 1040 and IEC 60825-1.
Class 3R: LASER RADIATION AVOID DIRECT EYE EXPOSURE CLASS 3R LASER PRODUCT		LASER RADIATION AVOID DIRECT EYE EXPOSURE CLASS 3R LASER PRODUCT PEAK POWER: 5 mW EMITTED WAVELENGTH: 650 nm This product is designated for use solely as a component and as such it does not fully comply with the standards relating to laser products specified in U.S. FDA CFR Title 21 part 1040 and IEC 60825-1.
Class 3B: LASER RADIATION AVOID EXPOSURE TO BEAM CLASS 3B LASER PRODUCT		LASER RADIATION AVOID EXPOSURE TO THE BEAM CLASS 3B LASER PRODUCT PEAK POWER: 130 mW EMITTED WAVELENGTH: 650 nm This product is designated for use solely as a component and as such it does not fully comply with the standards relating to laser products specified in U.S. FDA CFR Title 21 part 1040 and IEC 60825-1.
		INVISIBLE LASER RADIATION AVOID EXPOSURE TO THE BEAM CLASS 3B LASER PRODUCT PEAK POWER: 450 mW EMITTED WAVELENGTH: 808 nm This product is designated for use solely as a component and as such it does not fully comply with the standards relating to laser products specified in U.S. FDA CFR Title 21 part 1040 and IEC 60825-1.

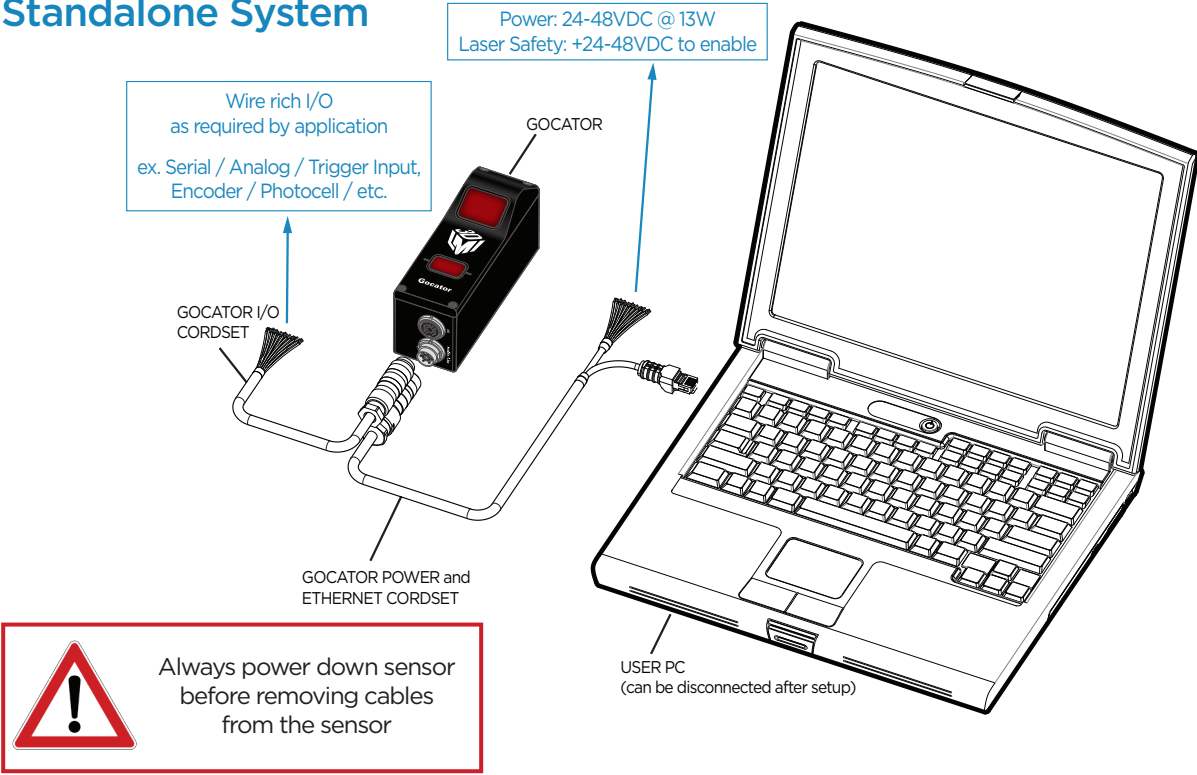
1. MOUNTING

**NOTE: Mounting the Gocator is recommended prior to applying power. Ensure that a proper earth ground and heat sink have been properly established prior to applying power.**



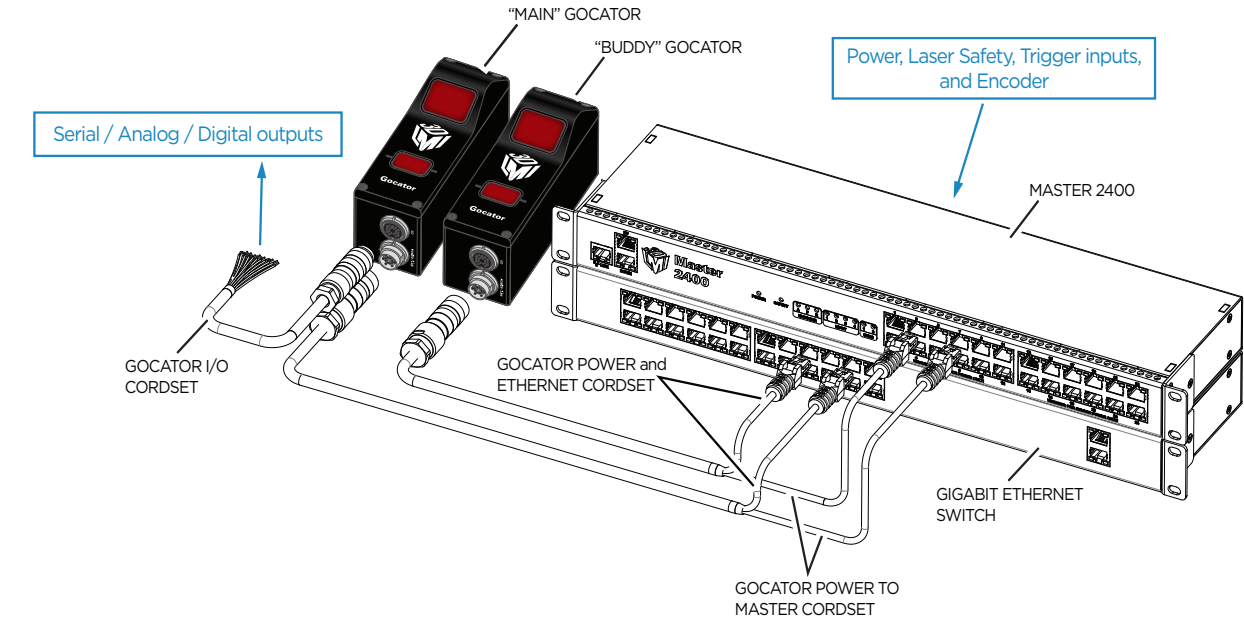
2. CONNECTING GOCATOR TO A HOST COMPUTER

Standalone System



Always power down sensor before removing cables from the sensor

Dual / Multi-Sensor System



Connector Pin Details

Gocator Power/LAN (to standalone and to Master)	Pin	Function	Conductor Color
	1	GND_24-48V	White/Orange & Black
	1	GND_24-48V	Orange/Black
	2	DC_24-48V	White/Green & Black
	2	DC_24-48V	Green/Black
	3	Safety-	White/Blue & Black
	4	Safety+	Blue/Black
	5	Sync+	White/Brown & Black
	6	Sync-	Brown/Black
	7	Ethernet MX1+	White/Orange
	8	Ethernet MX1-	Orange
	9	Ethernet MX2+	White/Green
	10	Ethernet MX2-	Green
	11	Ethernet MX3-	White/Blue
	12	Ethernet MX3+	Blue
	13	Ethernet MX4+	White/Brown
	14	Ethernet MX4-	Brown
Gocator I/O	Pin	Function	Conductor Color
	1	Trigger_in+	Grey
	2	Trigger_in-	Pink
	3	Out_1+ (Digital Output 0)	Red
	4	Out_1- (Digital Output 0)	Blue
	5	Out_2+ (Digital Output 1)	Tan
	6	Out_2- (Digital Output 1)	Orange
	7	Encoder_A+	White/Brown & Black
	8	Encoder_A-	Brown / Black
	9	Encoder_B+	Black
	10	Encoder_B-	Violet
	11	Encoder_Z+	White/Green & Black
	12	Encoder_Z-	Green / Black
	13	Serial_out+	White
	14	Serial_out-	Brown
	15	Reserved	Blue / Black
	16	Reserved	White / Blue & Black
	17	Analog_out+	Green
	18	Analog_out-	Yellow & Maroon/White
	19	Reserved	Maroon