

FlyCapture SDK 安裝手冊

適用安裝版本 2.x.x.x (Windows)

- FireWire, USB 3.0, USB 2.0, GigE Vision相機驅動程式
- 支援Windows與Linux 32/64bit作業系統
- 提供C/C++/Managed software API函式庫
- 提供範例程式與原始碼
- 支援ActiveX, TWAIN, DirectShow



Before Installation

- 壓縮檔需要密碼，請電話或來信詢問
- 請依照您的作業系統位元，選擇正確的安裝檔案(x86/x64)
- 執行FlyCapture安裝程式前，請不要連接攝影機
- 安裝手冊內容：
 - FlyCapture Installation, 安裝步驟說明
 - FlyCapture Contents, 安裝內容簡介
 - Note for Windows OS, Windows注意事項

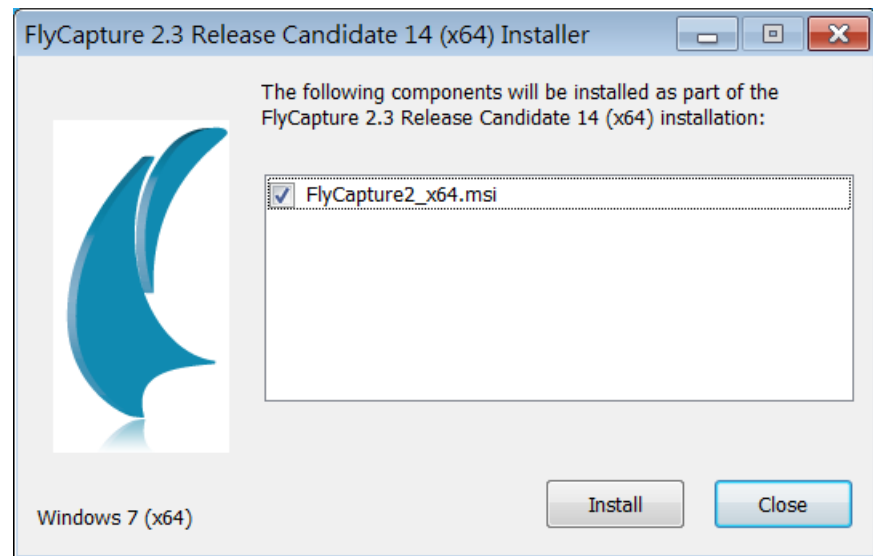
FlyCapture Installation

Step 1

- FlyCapture 2.3.x.x以上的版本需安裝Microsoft .NET Framework 4可轉散發套件，若您的電腦尚未安裝，則會多一個.NET Framework 4的安裝項目，代表您接下來需透過網際網路來進行該項目的下載與安裝
- 若無問題請按Install開始安裝

P.S.

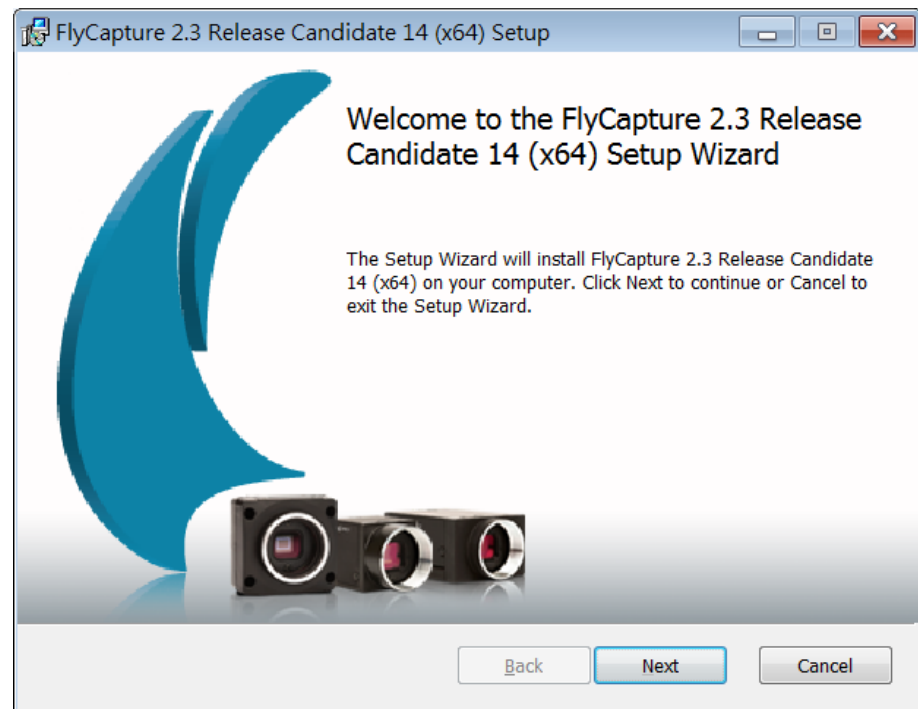
如果該台電腦無法連接網際網路，可以先從別台電腦連至微軟官網下載 [.NET Framework 4\(獨立安裝程式\)](#)，再複製過去先行安裝此項目(安裝完畢請重新開機，再繼續安裝FlyCapture)



FlyCapture Installation

Step 2

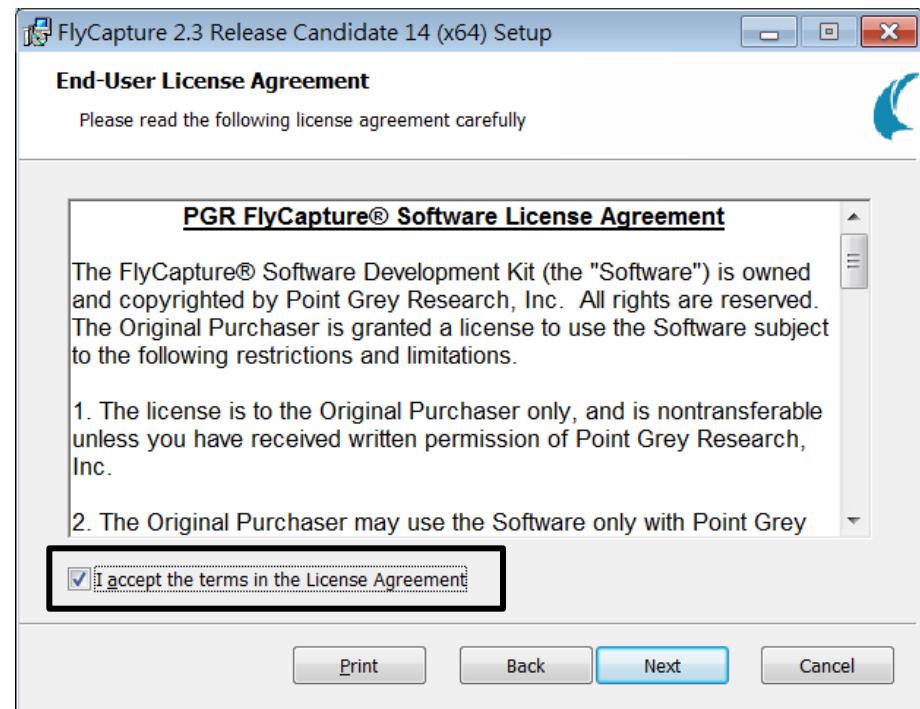
- 接下來將由安裝精靈為您依序設定相關安裝選項
- 請按**Next**開始進行安裝，或按**Cancel**離開安裝介面



FlyCapture Installation

Step 3

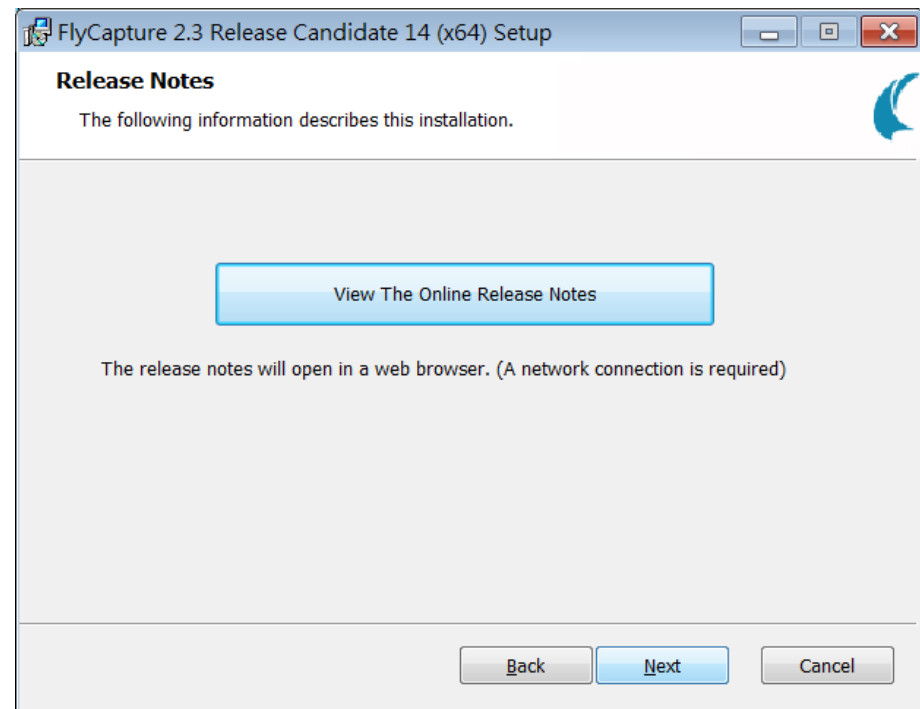
- 勾選接受程式授權條款後，請按 Next 進行下一步安裝



FlyCapture Installation

Step 4

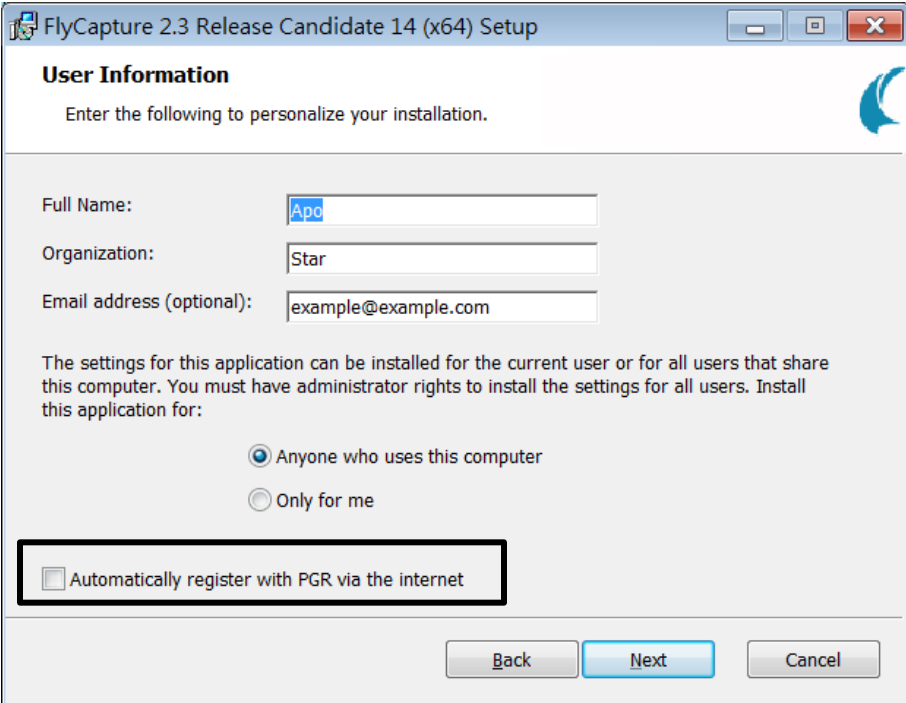
- 如有需了解程式版本更新說明，請點選View The Online Release Notes(需連接上網際網路)，或按 Next進行下一步安裝



FlyCapture Installation

Step 5

- 請取消Automatically register with PGR via the internet，按Next進行下一步安裝



The image shows a Windows installation window titled "FlyCapture 2.3 Release Candidate 14 (x64) Setup". The window is in the "User Information" step, which prompts the user to "Enter the following to personalize your installation." The fields are: "Full Name:" with "Apo" entered, "Organization:" with "Star" entered, and "Email address (optional):" with "example@example.com" entered. Below these fields, there is a text block explaining that settings can be installed for the current user or for all users, and that administrator rights are required for all users. Two radio buttons are present: "Anyone who uses this computer" (selected) and "Only for me". At the bottom, there is a checkbox labeled "Automatically register with PGR via the internet" which is currently unchecked and highlighted with a red rectangle. At the very bottom of the window are three buttons: "Back", "Next", and "Cancel".

User Information
Enter the following to personalize your installation.

Full Name:

Organization:

Email address (optional):

The settings for this application can be installed for the current user or for all users that share this computer. You must have administrator rights to install the settings for all users. Install this application for:

☒ Anyone who uses this computer
☐ Only for me

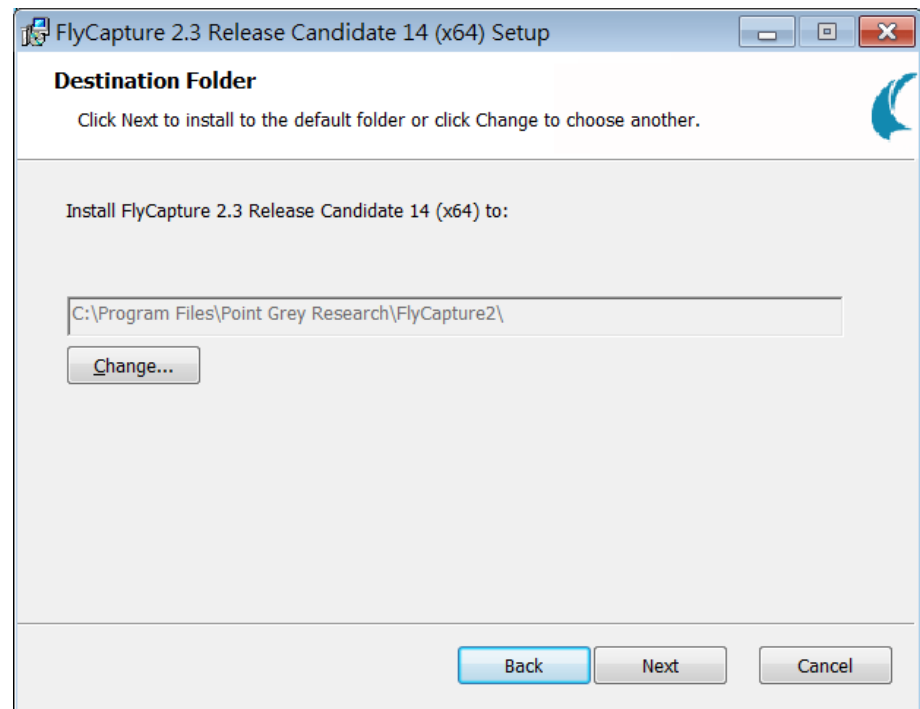
☐ Automatically register with PGR via the internet

Back Next Cancel

FlyCapture Installation

Step 6

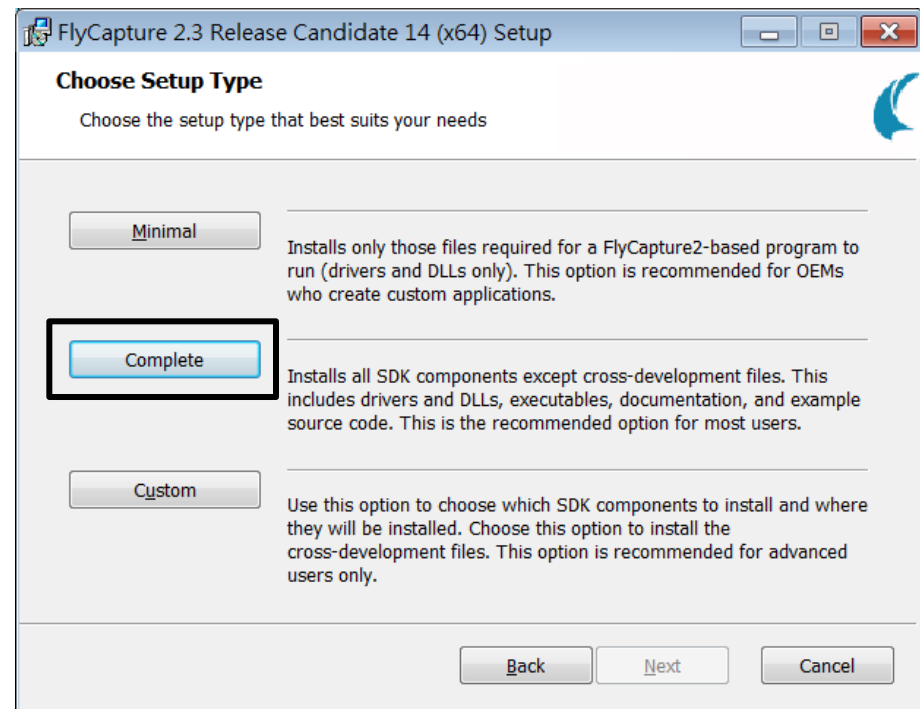
- 使用程式預設安裝路徑，按 Next 進行下一步安裝



FlyCapture Installation

Step 7

- 請選擇Complete完整安裝模式，按 Next進行下一步安裝



FlyCapture Installation

Step 8

- 預設沒有選取任何驅動類別，請依照您使用的攝影機介面，勾選欲安裝的驅動裝置
- 按 **Next** 進行下一步安裝

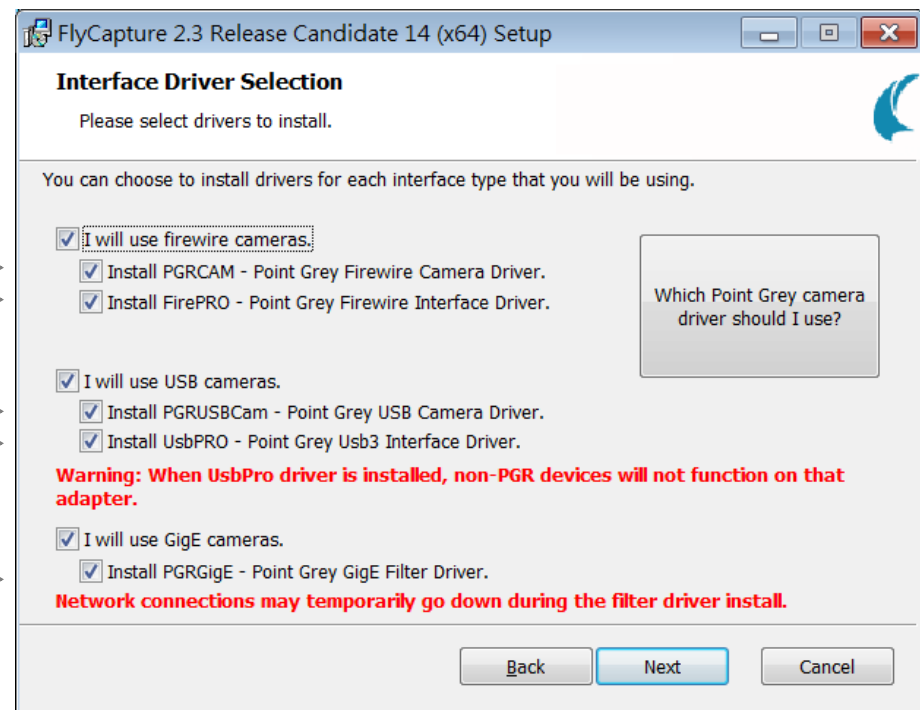
1394a/b FireWire火線相機驅動 →
1394a/b FireWire火線介面驅動 →

USB 2.0 / 3.0相機驅動 →
USB 3.0 介面驅動 →

GigE網路Filter Driver →

P.S.

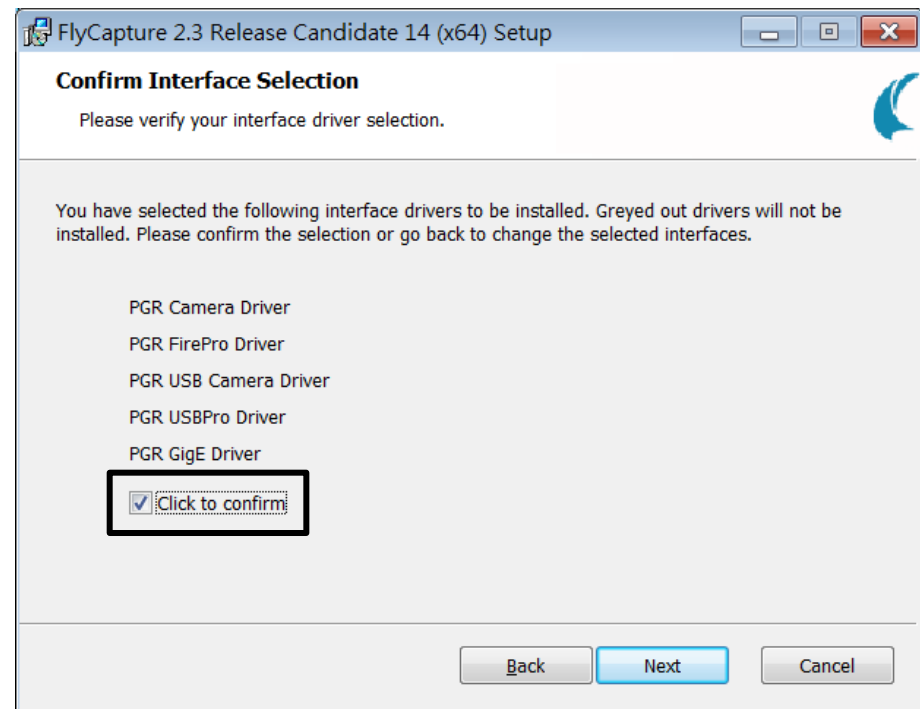
如果使用Point Grey USB 3.0介面驅動，該3.0介面只能識別Point Grey的相機



FlyCapture Installation

Step 9

- 確認您要安裝的驅動裝置，勾選Check to confirm，按Next進行下一步安裝



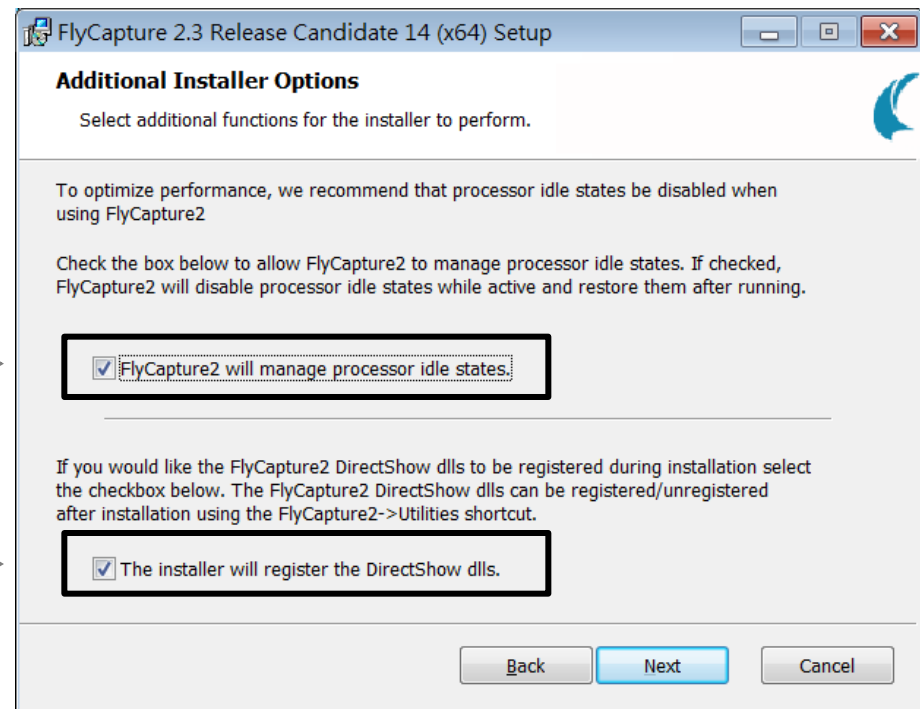
FlyCapture Installation

Step 10

- 請勾選此二項設定後，按Next進行下一步安裝

勾選此項關閉CPU閒置模式，讓影像傳輸更穩定——→

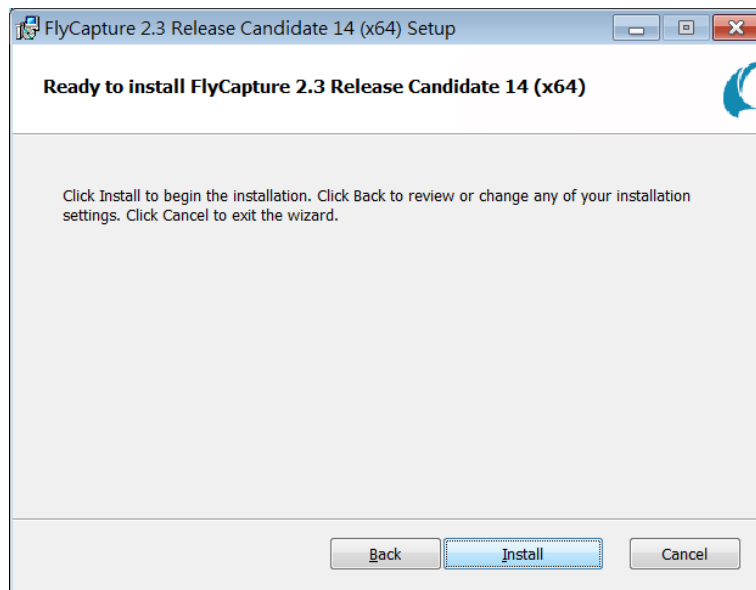
註冊DirectShow——→



FlyCapture Installation

Step 11

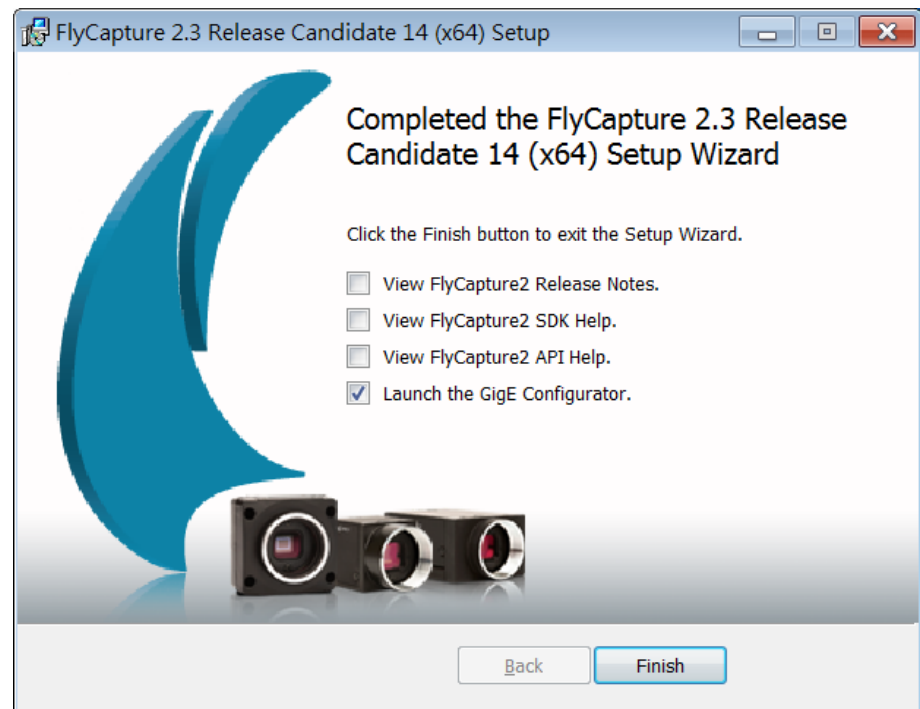
- 按Install開始進行安裝，需等待幾分鐘的時間



FlyCapture Installation

Step 12

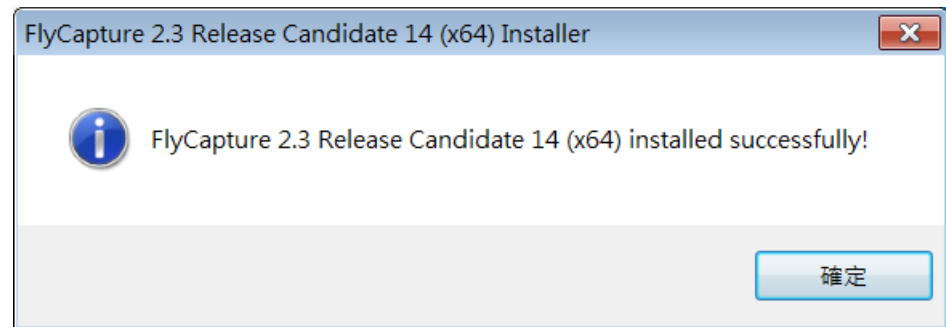
- 如有安裝GigE驅動程式，會出現Launch the GigE Configurator的選項，若勾選此項，會在結束安裝後自動開啟GigE設定視窗
- 按 Finish 完成安裝程序



FlyCapture Installation

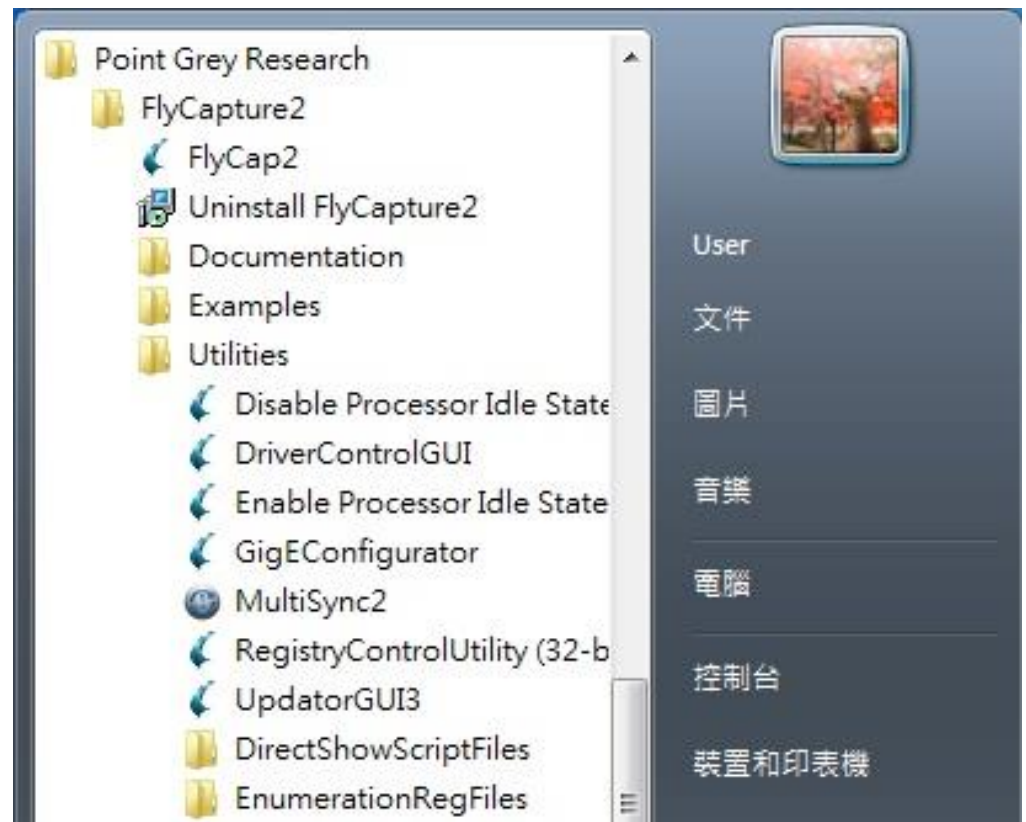
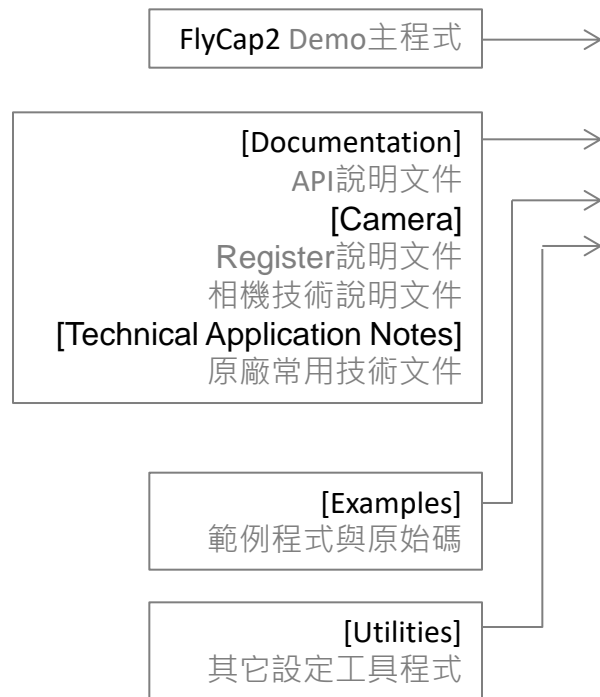
Step 13

- 恭喜您完成所有安裝程序，敬祝使用順利！
- 一寶實達感謝您的支持與鼓勵，如有任何技術或是業務問題，歡迎來電洽詢。
- 電話: 02-2249-0011
- 信箱: mail@apostar.com.tw
- 官網: www.apostar.com.tw



FlyCapture Contents

內容簡介



Note for Windows OS

Windows 7

- 若於Windows 7安裝完SDK後，相機於裝置管理員顯示為驚嘆號，請安裝下方微軟Windows 7 安全性更新套件，然後重新開機再確認裝置狀態。

KB3033929：x86 系統

<https://www.microsoft.com/zh-TW/download/details.aspx?id=46078>

KB3033929：x64 系統

<https://www.microsoft.com/zh-TW/download/details.aspx?id=46148>



Note for Windows OS

Windows 7

- 如果您的作業系統是 Windows 7，我們建議您不要使用Aero主題，以避免系統資源分配不足



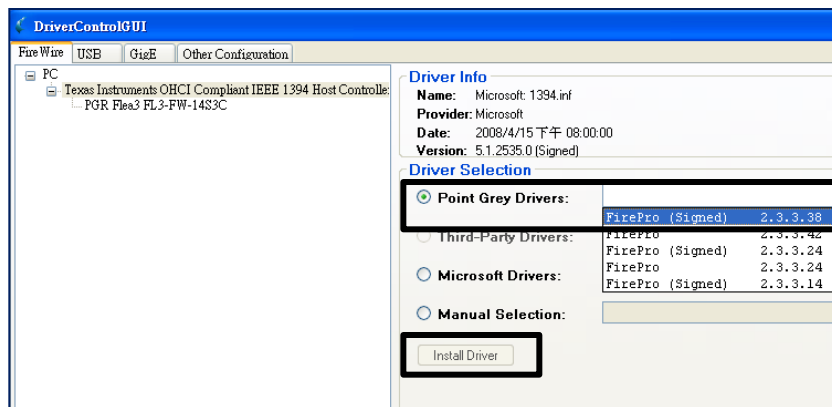
Note for Windows OS

Windows XP SP2

- 在更新為Windows XP SP2 之後，1394 裝置的效能可能會降低，Windows XP SP2 會將 1394變更為 S100 速度，解決方法如下(擇一使用)：

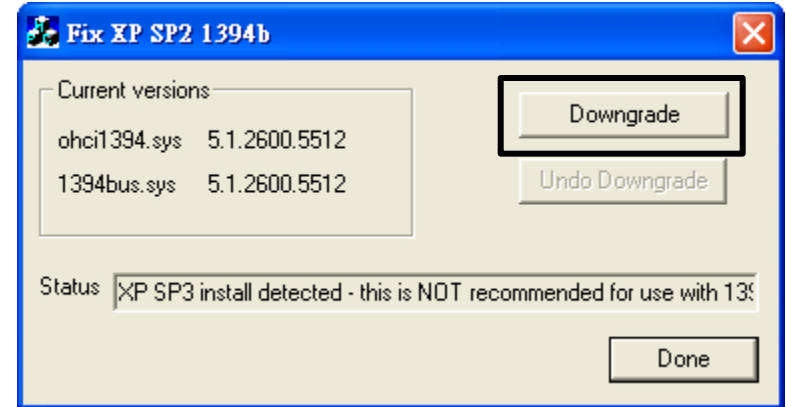
(一) 使用Point Grey的1394驅動

選擇最新版的**FirePro (Signed)**驅動後，按下方 Install Driver進行更換



(二) 還原Windows XP 1394驅動

在C:\Program Files\Point Grey Research\FlyCapture2\bin的路徑下找到 **fixSP2g.exe** 程式，執行Downgrade ([完整說明](#))



Thank You



<http://www.apostar.com.tw>



<http://www.ptgrey.com>